

Clay & Bailey Mfg. Co.



A CENTURY'S WORTH OF INNOVATION

300 Tee Vent

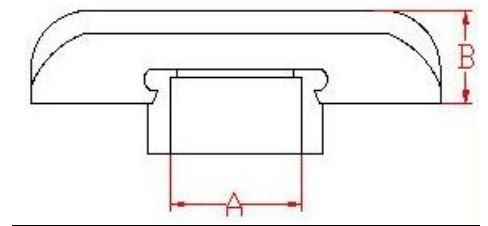


300

Features:

“T” style free flow vent is made of cast iron with 8 mesh galvanized screens. Openings directed downward prevent water and contaminants from entering the vent line. Available in cast iron black or galvanized (as shown). NPT thread is standard. Available in Slip on style with set screw.

| Galvanized Part No. | Size | lbs | SCFH@ 2.5psi | A | B |
|---------------------|--------|-----|--------------|--------|--------|
| 0300-10-0750 | 3/4" | 1.1 | 4,894 | 3/4" | 1 1/2" |
| 0300-10-1000 | 1" | 1.1 | 8,711 | 1" | 1 1/2" |
| 0300-10-1250 | 1 1/4" | 1.5 | 13,616 | 1 1/4" | 2" |
| 0300-10-2000 | 2" | 2.8 | 34,846 | 2" | 2 1/2" |
| 0300-10-2500 | 2 1/2" | 3.6 | 53,047 | 2 1/2" | 2 3/4" |
| 0300-10-3000 | 3" | 5.4 | 78,350 | 3" | 3" |



| Cast Iron Black Part No. | Size | lbs | 2.5psi | A | B |
|--------------------------|--------|-----|--------|--------|--------|
| 0300-01-0750 | 3/4" | 1.1 | 4,894 | 3/4" | 1 1/2" |
| 0300-01-1000 | 1" | 1.1 | 8,711 | 1" | 1 1/2" |
| 0300-01-1250 | 1 1/4" | 1.5 | 13,616 | 1 1/4" | 2" |
| 0300-01-2000 | 2" | 2.8 | 34,846 | 2" | 2 1/2" |
| 0300-01-2500 | 2 1/2" | 3.6 | 53,047 | 2 1/2" | 2 3/4" |
| 0300-01-3000 | 3" | 5.4 | 78,350 | 3" | 3" |

