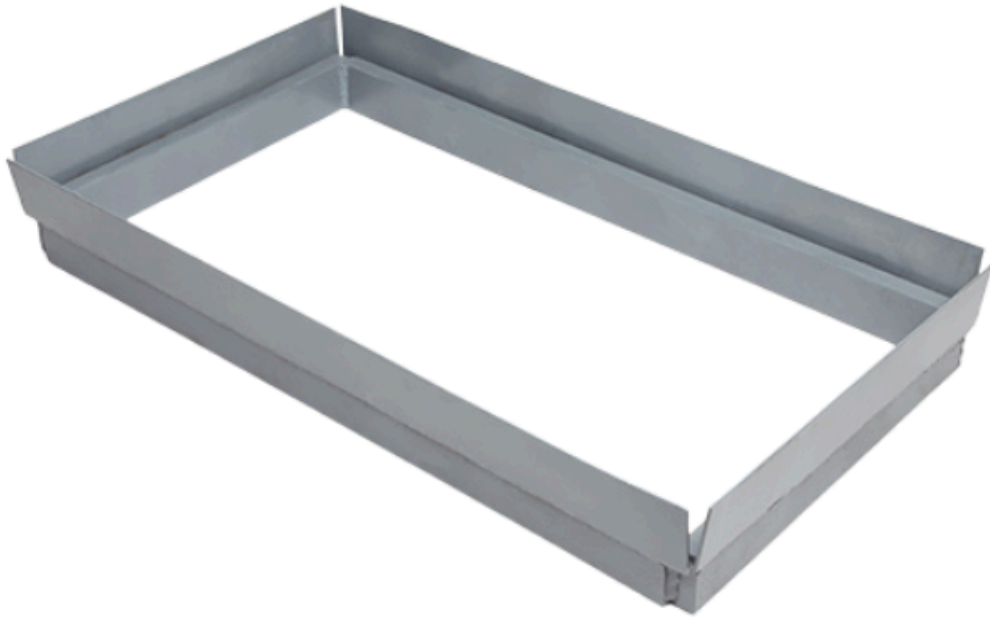




**CLAY & BAILEY**  
MANUFACTURING COMPANY

## AM HWY 2152 CATCH BASIN RISERS



**Features:**

The AM HWY 2152 Catch Basin Riser fits grates that measure 27" x 15" and a Lid Seat that measures 2".

Note that these risers ONLY raise the grates, not the frames around them.

We currently only stock Domestic castings.

Contact [sales@claybailey.com](mailto:sales@claybailey.com) for information on non-stock sizes.

**Part Number Variations:**

AM HWY 2152 Domestic 2" Catch Basin Riser

Revision Date: 3/17/26

Material Spec:  
ASTM A48, CLASS 35B, GRAY IRON



[www.claybailey.com](http://www.claybailey.com)



[sales@claybailey.com](mailto:sales@claybailey.com)



[1-800-821-6583](tel:1-800-821-6583)