

# Clay & Bailey Mfg. Co.



A CENTURY'S WORTH OF INNOVATION

## Manhole for Hot Product Trailers

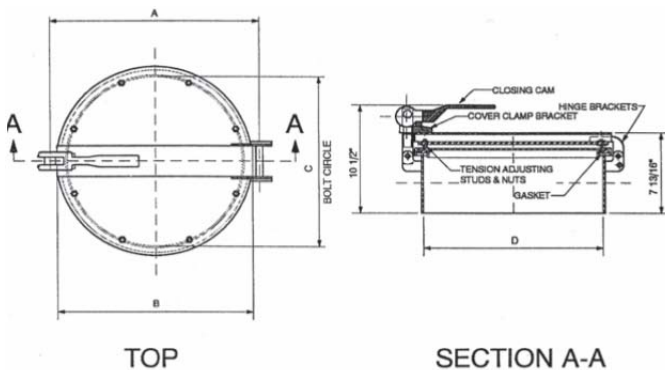


**1607-HM198**

### Features:

Designed to exceed DOT HM198 requirements for elevated temperature closures. Heavy duty, full opening manhole features safety cam (ball-in-socket) design, high temperature gasket (rated for 450F operating temperature) and a variety of collar heights. Options include aluminum collar and other gasket materials. Special models available for retrofitting to existing collars are available.

| Part No.     | Size        | Wt.  |
|--------------|-------------|------|
| 1607-09-1657 | 16" M Steel | 41.0 |



|     | A       | B       | C       | D        |
|-----|---------|---------|---------|----------|
| 16" | 19 5/8" | 18 5/8" | 16 1/2" | 16 3/16" |

### Maintenance Note:

Check gaskets periodically for cracking or UV damage, replace if necessary.



## 1607 HM 198 Manhole for DOT Hot Product Trailers

### *Repair Parts Listing*

| <b>Item</b> | <b>Part Number</b> | <b>Description</b> | <b>Material</b>                |
|-------------|--------------------|--------------------|--------------------------------|
| A           | 1801-01-1604       | Cam Handle         | Cast Iron                      |
| B           | 1607-05-1610       | 16" Gasket         | Fiberglass Teflon Encapsulated |
| C           | 1607-05-1810       | 18" Gasket         | Fiberglass Teflon Encapsulated |
| D           | 1607-09-1621       | Cam Link Assembly  | Mild Steel                     |
| E           | 1607-09-0112       | Retainer Nut       | Mild Steel                     |
| F           | 1820-09-2003       | Bolt               | Mild Steel                     |
| G           | 1607-17-1617       | Jam Nut            | Pltd. Mild Steel               |

