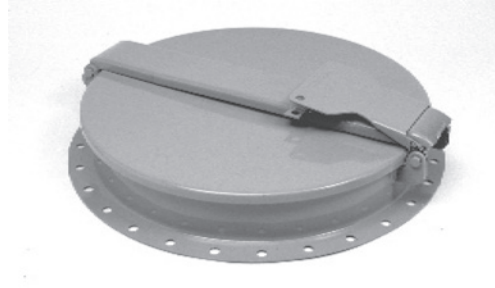


MANHOLES

Features

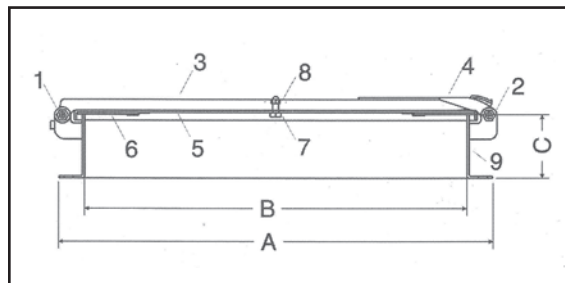
Sturdy manhole allows full opening access. Ideal for non-pressure applications, such as inspection hatches or access to dry storage bins. Strongback hinge and cam design provides strength, allows quick opening and is lockable. Available as a bolt-on or weld-on style. Standard gasket material is Buna-N with other gasket materials available.



1924

Part No.	Size	Material	Wt.
1924-03-2400	24"	Aluminum	32
1924-07-2400	24"	304 SST	40*
1924-09-2400	24"	Mild Steel	38
1924-17-2400	24"	Mild Steel Plated	38

Size	A	B	C
24"	27.125"	24"	6"



1924 Parts Listing

Part Number	Size	Description	Std. Material	Qty.
1		Hinge Pin	Mild Steel	1
	3/8"	Hex Nut	Mild Steel	1
2		Cam Pin	Mild Steel	1
	3/8"	Hex Nut	Mild Steel Plated	1
3		Hinge	Mild Steel	1
4		Cam	Mild Steel	1
5		Cover	Mild Steel	1
6		Cover Gasket	Buna-N	1
7		Stud	Mild Steel	1
8		Hex Nut	Mild Steel	1
9		Collar	Mild Steel	1

* Parts in contact are 304 SS; all other parts are MS plated.

