

**NEW
PRODUCTS!**

ABOVEGROUND STORAGE TANK PRODUCTS CATALOG

**NEW
UL Listing!**



**High Flow
Emergency Vents
UL 2583 Listed**



Emergency Valves



**Overfill
Prevention Valves**



Audible Alarms



**Overfill
Prevention Valves**



**Spill Containment
Box**

Clay and Bailey Mfg. Co.

6401 East 40th Street
Kansas City, Mo. 64129

1-816-924-3900

1-800-821-6583

Fax: 816-924-3903

www.ClayBailey.com

E-mail: CandBMfg@claybailey.com



A CENTURY'S WORTH OF INNOVATION



Has been
recycled



PRODUCT INDEX

PRODUCT	PAGES
Overfill Prevention Valves.....	6 – 18
U.L. Listed & ULC Listed	
Solo.....	12 - 13
Spill Containment Boxes.....	20 – 26
Used Oil.....	20
Remote.....	23, 26
Top Fill.....	21, 22, 24, 25
Pressure/ Vacuum Vent.....	28
Free Flow Vent.....	28, 29
Emergency Vents.....	30 – 39
U.L. Listed	
Large Diameter Emergency Vents.....	38
Audible Alarm.....	41-42
Sight Gauge.....	43-44
Sight Gauge with Audible Alarm.....	45
Overfill Prevention Valve with Alarm.....	18, 46
Ball Valves.....	48
External Thermal Emergency Valve.....	49
Drawings.....	50 - 53
Corrosion Protection	54

PART # INDEX

OVERFILL PREVENTION VALVES

PART #	DESCRIPTION	PAGE #
1228	2x4 Overfill Prevention Valve	6
1228	3 x 4 Overfill Prevention Valve	8
1228	4 x 6 Overfill Prevention Valve	10
1228	Solo Overfill Prevention Valve	12
1228	2" Overfill Prevention Valve	14
1228	2 X 4" Overfill Prevention Valve	16
1228	3 X 4" Overfill Prevention Valve with Audible Alarm	18, 46

SPILL CONTAINMENT BOXES

PART #	DESCRIPTION	PAGE #
6100	Used Spill Containment Box	20
6100	5 Gal Spill Containment Box	21
6100	10 Gal Spill Containment Box	22
6100	Remote Spill Containment Box	23
6100	3Y2-5-7 Gallon Spill Containment Box	24
6100	Fuel Station Spill Containment Box	26

VENTS

PART #	DESCRIPTION	PAGE #
88	Pressure Vacuum Vent	28
300	Tee Vent	28
395	Upflow Vent	29
401	Mushroom Vent	29

EMERGENCY VENTS

PART #	DESCRIPTION	PAGE #
354	SPRING LOADED EMERGENCY VENT	30
366-367	DEAD WEIGHT EMERGENCY VENT	31, 32, 39
368, 369, 370	DEAD WEIGHT EMERGENCY VENT	31, 33, 39
366-369-370	HIGH FLOW EMERGENCY VENTS	34, 35, 36

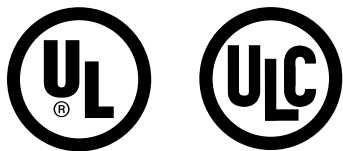
OTHER ACCESSORIES

PART #	DESCRIPTION	PAGE #
1313	SIGHT GAUGE	43
1350	SIGHT GAUGE WITH AUDIBLE ALARM	45
1400	AUDIBLE ALARM	41
	DRAWINGS	50-54
	CORROSION PROTECTION	54
700	BALL VALVES	48
305	EXTERNAL THERMAL EMERGENCY VALVE	49

NOTES

OVERFILL PREVENTION VALVES

OVERFILL PREVENTION VALVES



Features

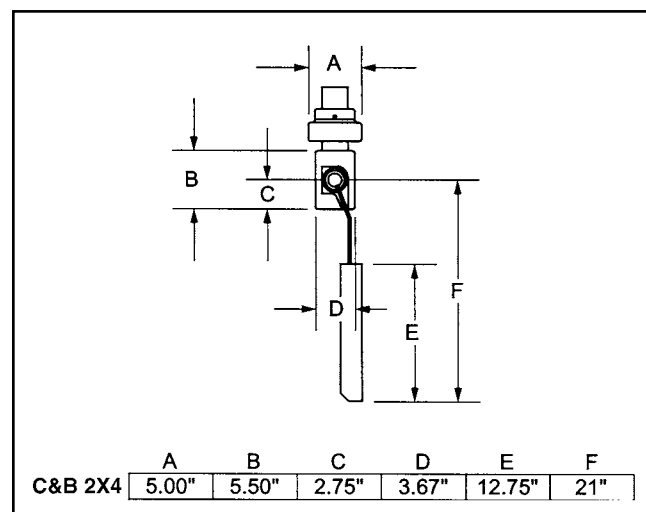
Designed for AST pressure fill applications*, the C&B 2X4 is UL Listed, ULC Listed and CARB registered. The C&B 2X4 is rated for up to 100 psi fuel delivery and has a flow rate of over 200 GPM at 40 psi. Outstanding design features are mechanical operation, retrofitable to an existing AST, can be used in a remote fill application and provides positive shut off of fuel delivery with no line shock. The adjustable collar allows custom installation to any type of AST for various fuel cutoffs. Materials used in the construction of the C&B 2X4 include hard anodized 356-T6 Aluminum, Stainless Steel rods, Closed Cell Polyurethane float and Buna gaskets.

Part No.	Size	Wt.lbs
1228-03-20XX	2"	10.0

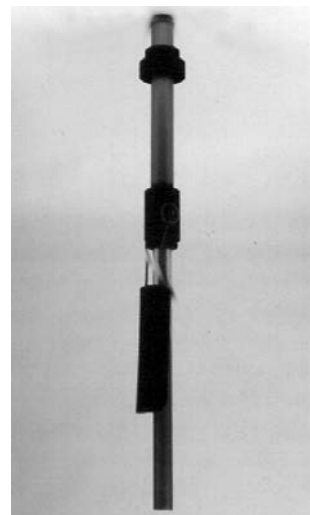
Standard Fill Tube Sizes

Part No.	Length
1228-03-2010	10"
1228-03-2016	16"
1228-03-2020	20"
1228-03-2024	24"

Other lengths available, at additional cost



*Applicable for fuels other than #5 and #6 fuel oils.
Consult factory for applications other than fuel.



#1228 C&B 2x4

U.S. Patent #5,531,247

C&B 2X4 Options

Part No.	Description
----------	-------------

Liquid Tight Connection System:

01228-03-2052	2" Adaptor Dust Cap
01228-03-2050	2" Dry Break Cam Adaptor
01228-03-2051	2" Dry Break Coupler

Cam Lock Connection System:

01228-03-2053	2" Cam Lock Adaptor
01228-03-2054	2" Dust Cap

Drop Tubes:

01228-03-5048	2" Flanged Aluminum Drop Tube 4'
01228-03-5072	2" Flanged Aluminum Drop Tube 6'
01228-03-5096	2" Flanged Aluminum Drop Tube 8'



OVERFILL PREVENTION VALVES

Determining the Fill Tube & Drop Tube Length

Fill Tube Length

From the tables to the right, determine your tanks' shut-off height.

Example:

Tank is round horizontal

Primary tank diameter is 96"

Riser pipe nipple height is 4"

The % capacity shut-off is 95%

From the round horizontal table to the right, we determine the shut-off height to be 86.8". To find the fill tube length, use the following calculations:

Subtract the shut-off height, ('S' in Figure 1), from the total height of the primary tank, ('H' in Figure 1).

$$96" - 86.8" = 9.2"$$

Add the height of the pipe nipple ('L' in Figure 1).

$$9.2" + 4" = 13.2"$$

Add 3" to this figure, (takes threads and collar adjustability into account, this number is constant).

$$13.2" + 3" = 16.2"$$

Your fill tube length is 16.2", since 16" is a Clay & Bailey standard length, you would order a 16" fill tube.

Drop Tube Length

To find the drop tube length, (this calculation gives a drop tube length to 6" above the primary tank bottom):

For the F-30, subtract 8" from the shut-off height ('S' in Figure 1).

$$86.8" - 8" = 78.8"$$

Since the next nearest Clay & Bailey standard length is 96" or 8', you would order an 8' drop tube.

NOTE:

- Where spill containment is used, consideration should be given to the overall height needed to install cam - lock adaptors and dust caps.
- All Clay & Bailey Overfill Prevention Valves can be used in AST remote fill applications.

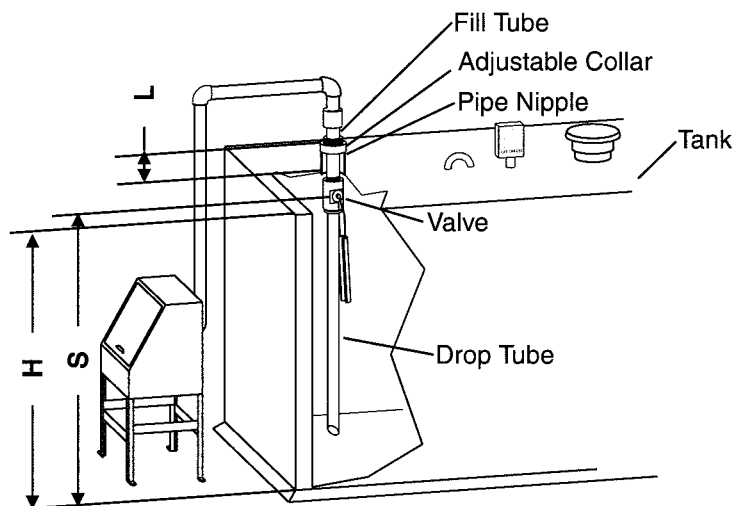


Figure 1

ROUND HORIZONTAL TANK HEIGHT	% SHUT-OFF	
	90% HEIGHT	95% HEIGHT
32"	27"	28.9"
34"	28.7"	30.7"
36"	30.4"	32.5"
38"	32.1"	34.3"
40"	33.7"	36.1"
42"	35.4"	37.9"
44"	37.1"	39.7"
46"	38.8"	41.6"
48"	40.5"	43.4"
50"	42.2"	45.2"
52"	43.9"	47"
54"	45.6"	48.8"
56"	47.3"	50.6"
58"	49"	52.4"
60"	50.6"	54.2"
62"	52.3"	56"
64"	54"	57.8"
66"	55.7"	59.6"
68"	57.4"	61.4"
70"	59.1"	63.3"
72"	60.8"	65.1"
74"	62.5"	66.9"
76"	64.2"	68.7"
78"	65.9"	70.5"
80"	67.5"	72.3"
82"	69.2"	74.1"
84"	70.9"	75.9"
86"	72.6"	77.7"
88"	74.3"	79.5"
90"	76"	81.3"
92"	77.7"	83.2"
94"	79.4"	85"
96"	81.1"	86.8"
98"	82.7"	88.6"
100"	84.4"	90.4"
102"	86.1"	92.2"
104"	87.8"	94"
106"	89.5"	95.8"
108"	91.2"	97.6"
110"	92.9"	99.4"
112"	94.6"	101.2"
114"	96.3"	103"
116"	98"	104.9"
118"	99.6"	106.7"
120"	101.3"	108.5"

RECTANGULAR TANK HEIGHT	% SHUT-OFF	
	90% HEIGHT	95% HEIGHT
32"	28.8"	---
34"	30.6"	---
36"	32.4"	---
38"	34.2"	---
40"	36"	---
42"	37.8"	39.9"
44"	39.6"	41.8"
46"	41.4"	43.7"
48"	43.2"	45.6"
50"	45"	47.5"
52"	46.8"	49.4"
54"	48.6"	51.3"
56"	50.4"	53.2"
58"	52.2"	55.1"
60"	54"	57"
62"	55.8"	58.9"
64"	57.6"	60.8"
66"	59.4"	62.7"
68"	61.2"	64.6"
70"	63"	66.5"
72"	64.8"	68.4"
74"	66.6"	70.3"
76"	68.4"	72.2"
78"	70.2"	74.1"
80"	72"	76"
82"	73.8"	77.9"
84"	75.6"	79.8"
86"	77.4"	81.7"
88"	79.2"	83.6"
90"	81"	85.5"
92"	82.8"	87.4"
94"	84.6"	89.3"
96"	86.4"	91.2"
98"	88.2"	93.1"
100"	90"	95"
102"	91.8"	96.9"
104"	93.6"	98.8"
106"	95.4"	100.7"
108"	97.2"	102.6"
110"	99"	104.5"
112"	100.8"	106.4"
114"	102.6"	108.3"
116"	104.4"	110.2"
118"	106.2"	112.1"
120"	108"	114"

OVERFILL PREVENTION VALVES



Features

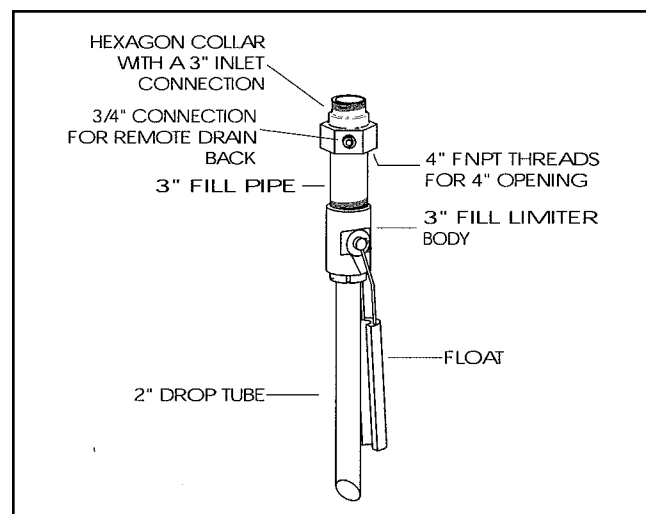
Designed for AST's requiring high GPM flow rate, but only having a 4" NPT opening. The C&B 3X4 has a 3" fill and easily installs in a 4" opening. Flow rate is over 300 gallons per minute at 40 psi. The C&B 3X4 is rated for fuel delivery up to 100 psi and provides positive fuel shut off at high fill rates. Entirely mechanical in operation, the C&B 3X4 can be used in remote fill applications, retrofitted to an existing AST, and has a unique drain back system designed to allow the delivery hose to be emptied after fuel delivery has been stopped. The 3" NPT fill opening allows easy connection to piping or cam fittings. See reverse side for drain back information.

Part No.	Size	Wt.lbs
1228-03-35XX	3"	15.0

Standard Fill Tube Sizes

Part No.	Length
1228-03-3510	10"
1228-03-3516	16"
1228-03-3520	20"
1228-03-3524	24"

Other lengths available, at additional cost. To determine fill tube and drop tube length - see F-30 ordering guide.



#1228 C&B 3x4

U.S. Patent #5,531,247

C&B 3X4 Options

Part No.	Description
1228-03-3053	3" Cam Lock Adaptor
1228-03-3054	3" Cam Lock Dust Cap

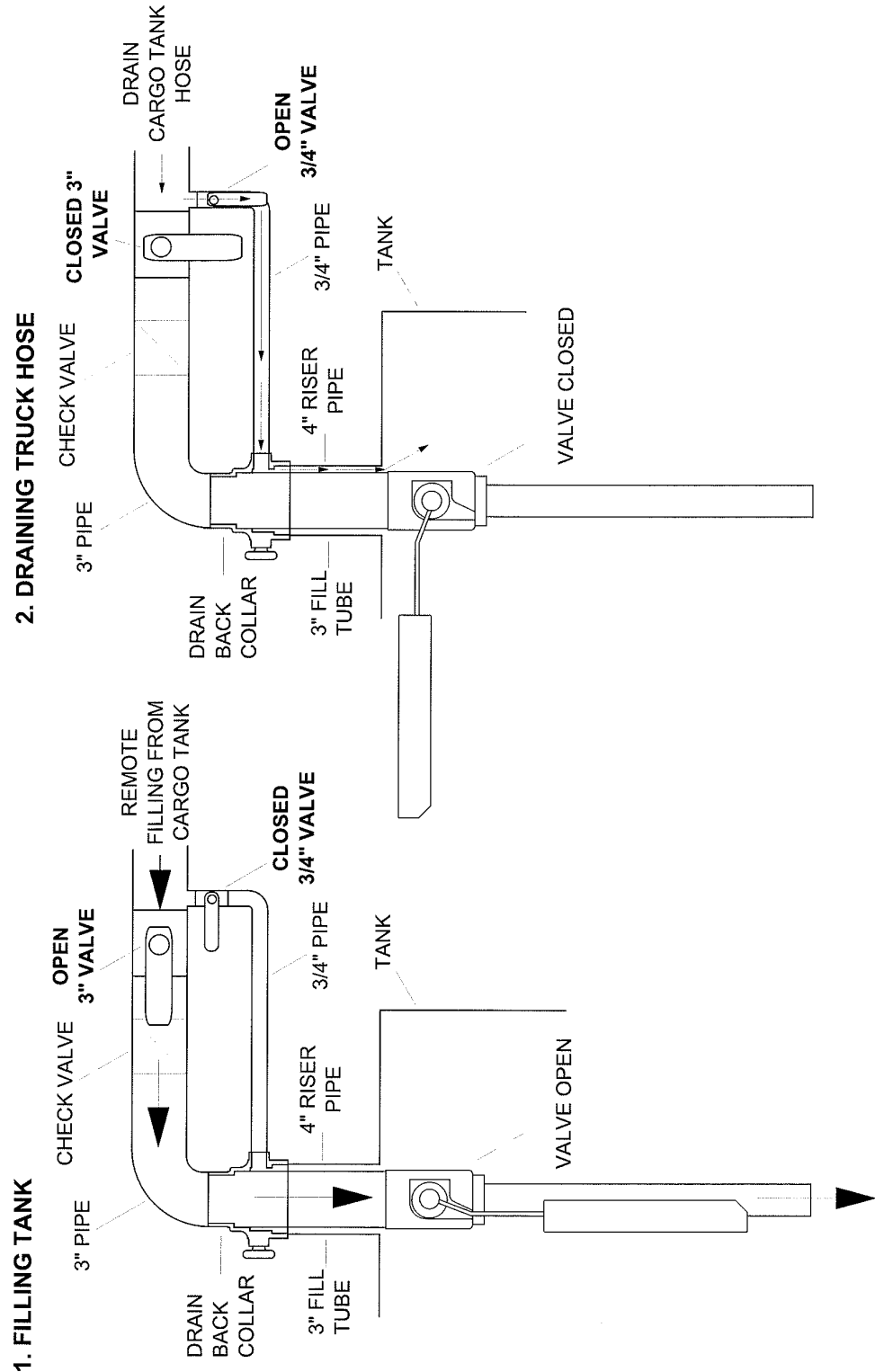
See C&B 2X4 Options for drop tubes

*Applicable for fuels other than #5 and #6 fuel oils.
Consult factory for special applications other than fuel.



OVERFILL PREVENTION VALVES

C&B 3X4 Drain Back Feature - Operation



OVERFILL PREVENTION VALVES



Features

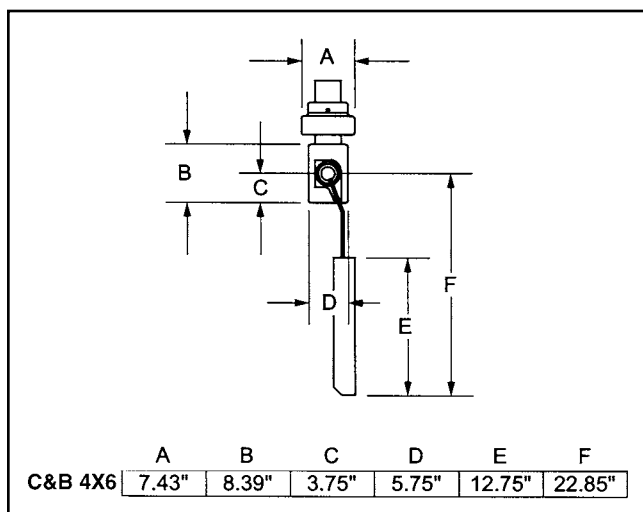
Designed for AST pressure fill applications*, the C&B 4X6 is ULC Listed and UL Listed. The C&B 4X6 is rated for up to 100 psi fuel delivery and has a flow rate of over 300 GPM at 40 psi. Outstanding design features are mechanical operation, use in remote fill applications and provides positive shut off of fuel delivery with no line shock. The adjustable collar allows custom installation to any type of AST and allows various fuel shut off levels. Materials used in the construction of the C&B 4X6 include hard anodized 356-T6 Aluminum, Stainless Steel rods, Closed Cell Polyurethane float and Buna gaskets.

Part No.	Size	Wt.lbs
1228-03-60XX	4"	25.0

Standard Fill Tube Sizes

Part No.	Length
1228-03-6010	10"
1228-03-6016	16"
1228-03-6020	20"
1228-03-6024	24"

Other lengths available, at additional cost



*Applicable for fuels other than #5 and #6 fuel oils.
Consult factory for applications other than fuel.



#1228 C&B 4x6

U.S. Patent #5,531,247

C&B 4X6 Options

Part No.	Description
Cam Lock Connection System:	
01228-03-6053	4" Cam Lock Adaptor
01228-03-6054	4" Dust Cap
Drop Tubes:	
01228-03-6148	4" Flanged Aluminum Drop Tube 4'
01228-03-6172	4" Flanged Aluminum Drop Tube 6'
01228-03-6196	4" Flanged Aluminum Drop Tube 8'
01228-03-6199	4" Flanged Aluminum Drop Tube 10'



OVERFILL PREVENTION VALVES

Determining the Fill Tube & Drop Tube Length

Fill Tube Length

From the tables to the right, determine your tanks' shut-off height.

Example:

Tank is round horizontal

Primary tank diameter is 96"

Riser pipe nipple height is 4"

The % capacity shut-off is 95%

From the round horizontal table to the right, we determine the shut-off height to be 86.8". To find the fill tube length, use the following calculations:

Subtract the shut-off height, ('S' in Figure 1), from the total height of the primary tank, ('H' in Figure 1).

$$96" - 86.8" = 9.2"$$

Add the height of the pipe nipple ('L' in Figure 1).

$$9.2" + 4" = 13.2"$$

Add 3" to this figure, (takes threads and collar adjustability into account, this number is constant).

$$13.2" + 3" = 16.2"$$

Your fill tube length is 16.2", since 16" is a Clay & Bailey standard length, you would order a 16" fill tube.

Drop Tube Length

To find the drop tube length, (this calculation gives a drop tube length to 6" above the primary tank bottom):

For the C&B 2X4, subtract 8" from the shut-off height ('S' in Figure 1).

$$86.8" - 8" = 78.8"$$

Since the next nearest Clay & Bailey standard length is 96" or 8', you would order an 8' drop tube.

NOTE:

- Where spill containment is used, consideration should be given to the overall height needed to install cam - lock adaptors and dust caps.
- All Clay & Bailey Overfill Prevention Valves can be used in AST remote fill applications.

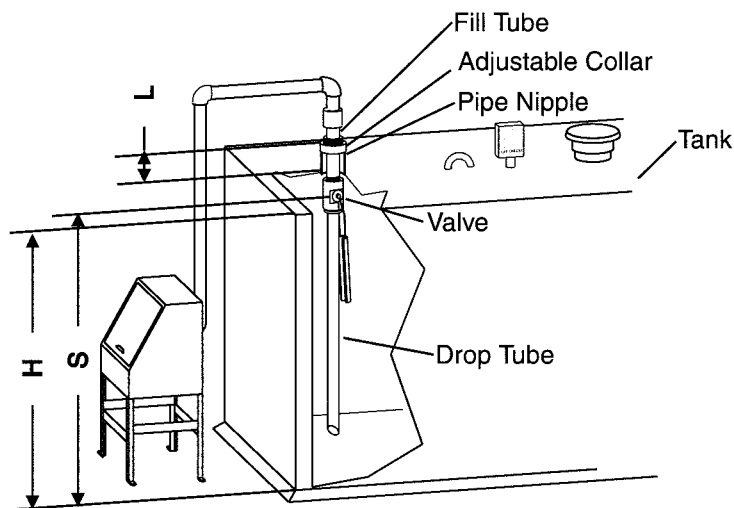


Figure 1

RECTANGULAR TANK HEIGHT	% SHUT-OFF 90% HEIGHT	95% HEIGHT
32"	28.8"	---
34"	30.6"	---
36"	32.4"	---
38"	34.2"	---
40"	36"	---
42"	37.8"	39.9"
44"	39.6"	41.8"
46"	41.4"	43.7"
48"	43.2"	45.6"
50"	45"	47.5"
52"	46.8"	49.4"
54"	48.6"	51.3"
56"	50.4"	53.2"
58"	52.2"	55.1"
60"	54"	57"
62"	55.8"	58.9"
64"	57.6"	60.8"
66"	59.4"	62.7"
68"	61.2"	64.6"
70"	63"	66.5"
72"	64.8"	68.4"
74"	66.6"	70.3"
76"	68.4"	72.2"

ROUND HORIZONTAL TANK HEIGHT	% SHUT-OFF 90% HEIGHT	95% HEIGHT
32"	27"	28.9"
34"	28.7"	30.7"
36"	30.4"	32.5"
38"	32.1"	34.3"
40"	33.7"	36.1"
42"	35.4"	37.9"
44"	37.1"	39.7"
46"	38.8"	41.6"
48"	40.5"	43.4"
50"	42.2"	45.2"
52"	43.9"	47"
54"	45.6"	48.8"
56"	47.3"	50.6"
58"	49"	52.4"
60"	50.6"	54.2"
62"	52.3"	56"
64"	54"	57.8"
66"	55.7"	59.6"
68"	57.4"	61.4"
70"	59.1"	63.3"
72"	60.8"	65.1"
74"	62.5"	66.9"
76"	64.2"	68.7"
78"	65.9"	70.5"

OVERFILL PREVENTION VALVES

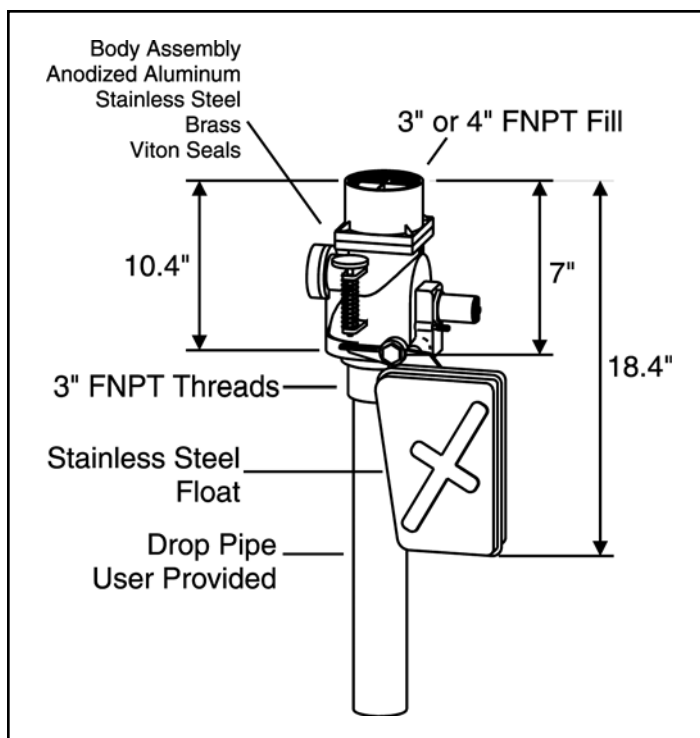
Features

Designed for large ASTs where high GPM flow rate is required. The Solo has a flow rate of over 300+ gpm at 40psi. A unique feature of the Solo is a 2 stage shut-off of fuel. The first shut-off point is set at the required capacity and the second stage shut-off point allows the delivery hose to be drained. The Solo installs thru a manhole cover, and can be adjusted for various shut-off capacities. For special chemical applications, consult the factory for availability and compatibility.

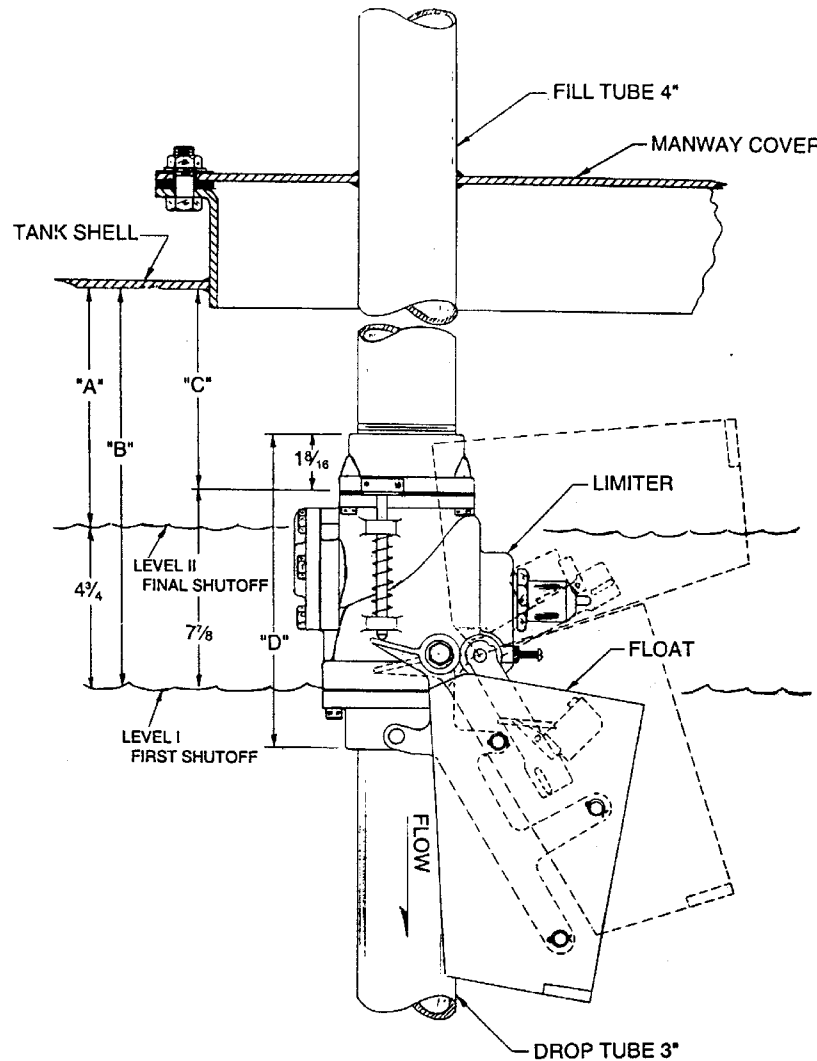
Part No.	Size	Wt.lbs
01228-01-2001	3"	15.0
01228-01-2000	4"	17.0



#1228 Solo



OVERFILL PREVENTION VALVES



DIMENSIONS

	TANK DIAMETER							
	64	72	84	96	108	120	126	132
A	1 3/4	1 1/4	3/4	5/4	5/4	11/4	11/4	7/4
B	6 1/2	6	8	10	10	16	16	12
C			1/8	2 1/8	2 1/8	8 1/8	8 1/8	4 1/8
D	10 1/4	10 1/4	10 1/4	10 1/4	10 1/4	10 1/4	10 1/4	10 1/4
95%	57 1/2	66	76	86	98	104	110	120



OVERFILL PREVENTION VALVES

Clay & Bailey introduces the solution to the problems of:

- * Restricted height GenSet Tanks with storage capacity
- * Installing an overfill Prevention Valve into a 2" opening
- * Preventing expensive overfilling of AST's
- * Unreliable whistle/vent alarms

The #1228-03-2200 2" Overfill Prevention Valve have these outstanding design features:

- * Installs in a 2" NPT (1228-03-2200 model or
- * Accepts pressure delivery of product
- * Provides GenSet tanks with large fuel storage capacity at shutoff height
- * Provides positive shut off of fuel
- * Retro-fits to an existing AST
- * Mechanical in operation—no user interface required
- * Compatible with fuels (Consult factory for your specific product)
- * Minimum 5 PSI operating pressure required

Note- Liquid tight fill connection is required for proper operation.



1228-03-2200



Patented!
#7584766



OVERFILL PREVENTION VALVES

AST

Typical Shut Off heights and Capacities of Aboveground Storage Tanks for the #1228-03-2200

Configuration: 2" Opening; direct installation into weld flange; single wall
top of tank

AST style	AST Height	Shut Off Height	% Capacity
Rectangle	32"	29"	90%
Rectangle	34"	31"	91%
Rectangle	36"	33"	92%
Rectangle	42"	39"	93%
Rectangle	48"	45"	94%
Rectangle	54"	51"	95%
Rectangle	60"	57"	95%

Configuration: 2" Opening; direct installation into weld flange; single wall top of tank

AST style	AST Height	Shut Off Height	% Capacity
Round	32"	29"	95%
Round	34"	31"	95%
Round	36"	33"	95%
Round	42"	39"	95%
Round	48"	45"	97%

Configuration: 2" Opening; direct installation into weld flange; single wall top of tank

AST style	AST Height	Shut Off Height	% Capacity
Obround	27" x 44"	41"	95%



OVERFILL PREVENTION VALVES

Clay & Bailey introduces the solution to the problems of:

- * Restricted height GenSet Tanks with storage capacity
- * Installing an overfill Prevention Valve into a 4" opening
- * Preventing expensive overfilling of AST's
- * Unreliable whistle/vent alarms

The #1228-03-2400C 2 x 4" Overfill Prevention Valve have these outstanding design features:

- * 4" NPT (1228-03-2400C model) opening
- * Accepts pressure delivery of product
- * Provides GenSet tanks with large fuel storage capacity at shutoff height
- * Provides positive shut off of fuel
- * Retro-fits to an existing AST
- * Mechanical in operation—no user interface required
- * Compatible with fuels (Consult factory for your specific product)
- * Minimum 5 PSI operating pressure required

Note- Liquid tight fill connection is required for proper operation.



1228-03-2400C



Patented!
#7584766



OVERFILL PREVENTION VALVES

Typical Shut Off Heights and Capacities of Aboveground Storage Tanks for the #1228-03-2400C

Configuration: 4" Opening; 5" high pipe nipple; single wall top of tank

AST Style	AST Height	Shut Off Height	% Capacity
Rectangle	12"	10.8"	90%
Rectangle	14"	12.6"	90%
Rectangle	16"	14.4"	90%
Rectangle	24"	22.8"	95%
Rectangle	30"	28.6"	95%
Rectangle	36"	34.2"	95%

Configuration: 4" Opening; 6" high pipe nipple; single wall top of tank

AST Style	AST Height	Shut Off Height	% Capacity
Rectangle	12"	11.4"	95%
Rectangle	14"	13.3"	95%
Rectangle	16"	15.2"	95%

Configuration: 4" Opening; 5" high pipe nipple; single wall top of tank

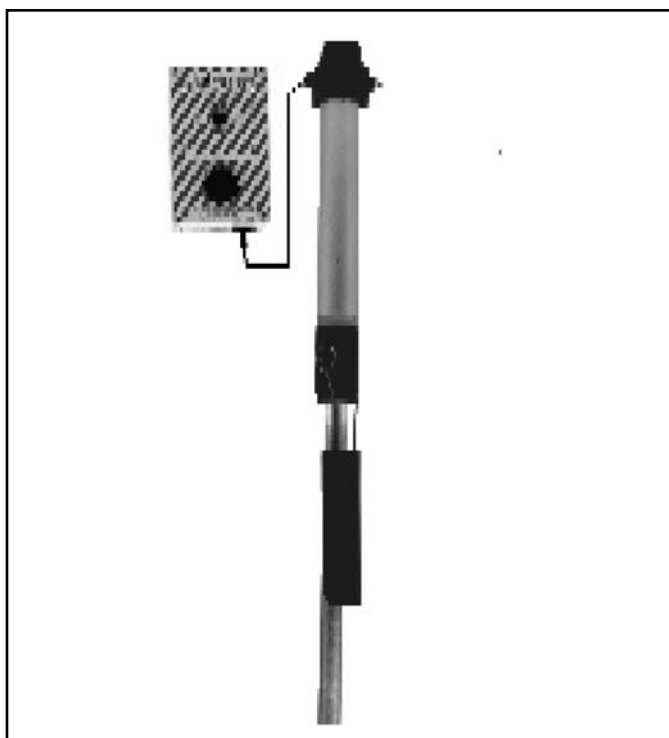
AST Style	AST Height	Shut Off Height	% Capacity
Round	12"	11"	90%
Round	14"	12"	90%
Round	16"	14"	90%
Round	24"	23"	95%
Round	30"	27"	95%
Round	36"	33"	95%

O.F.P. VALVE WITH AUDIBLE ALARM

Features

Combination of #1228 C&B 3X4 Overfill Prevention Valve and #1400 Audible Alarm allows for high level alarm and Overfill Prevention of an AST through one opening. The C&B 3X4 is mechanical in operation and reliably shuts off the fuel supply of an AST at a predetermined level. Combining the C&B 3X4 with the #1400 Audible Alarm helps meet current regulations for AST Overfill Prevention. Alarm is battery operated, intrinsically safe, and complies with NEMA requirements. 95 decibel alarm alerts delivery person when fluid in tank reaches the predetermined level. Level is adjustable for specific applications. Unit comes ready to install with C&B 3X4, Alarm, float switch and batteries. Alarm may also be ordered with #1313 sight gauge, (#1350), for complete liquid level monitoring and alarm.

Part No.	Size	Wt.lbs
01228-03-35AL	3"	15.0



1228 C&B 3X4 With Alarm



SPILL CONTAINMENT BOXES

SPILL CONTAINMENT BOXES

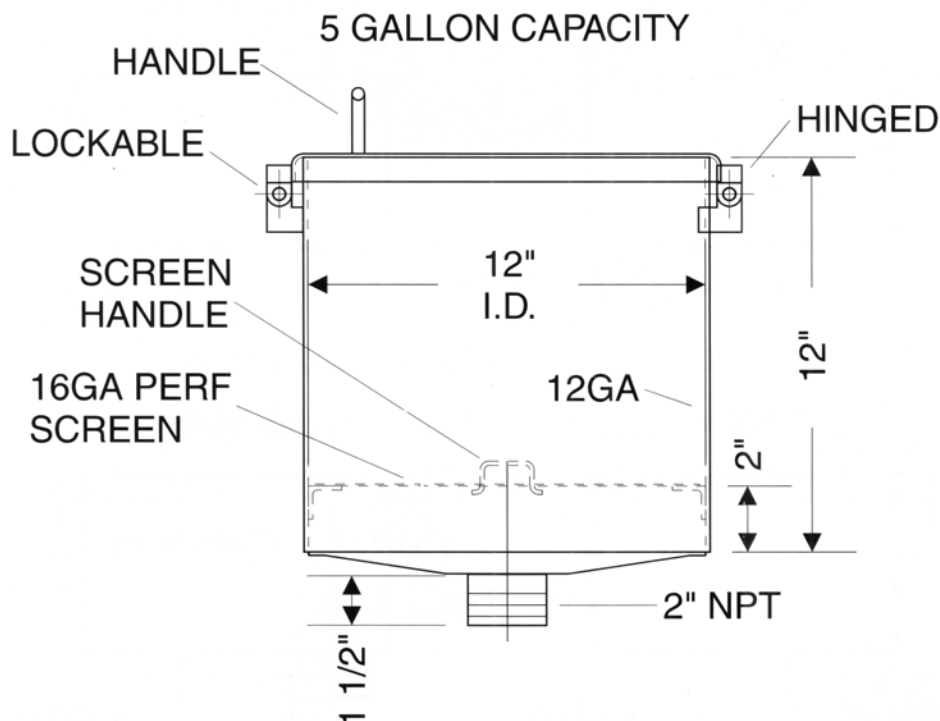
Features

The economical solution to the problem of transferring used oil into an AST. Constructed of durable 12GA mild steel with a 16GA mild steel perforated screen to support items left for draining. Lockable lid has a weather resistant design. Dished bottom allows for complete drainage. Standard connection is a 2" male NPT outlet, 4" male NPT also available. Furnished unpainted, with the option of epoxy paint or powder coating, (outside only).



USED OIL 6100

Part No.	Size	Wt.lbs
6100-09-1210	5 Gal	25.0



SPILL CONTAINMENT BOXES

AST

Features

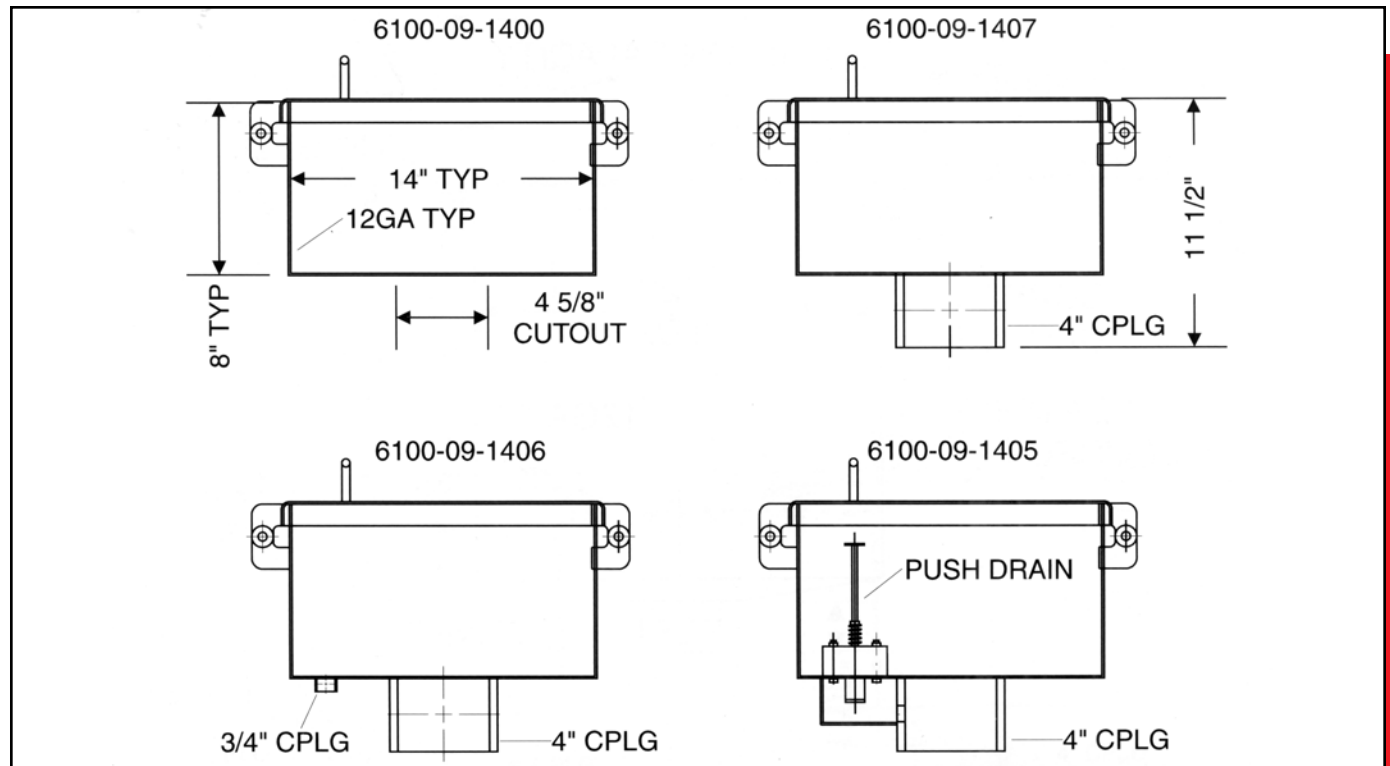
Durable spill containment box designed for containment of small spills during filling of an AST. Standard features include a lockable, weather deflecting lid with both the lid and base made of 12GA mild steel. Available in a weld-on style or custom built to your specifications. Options include powder coating or epoxy painting the outside, push style drain with retrofit 4" coupler and non-sparking aluminum lid.



5 GALLON 6100

Part No.	Size	Wt.lbs
6100-09-1405	5 Gal	40.0

Variations Available - Or built to your specifications



SPILL CONTAINMENT BOXES

Features

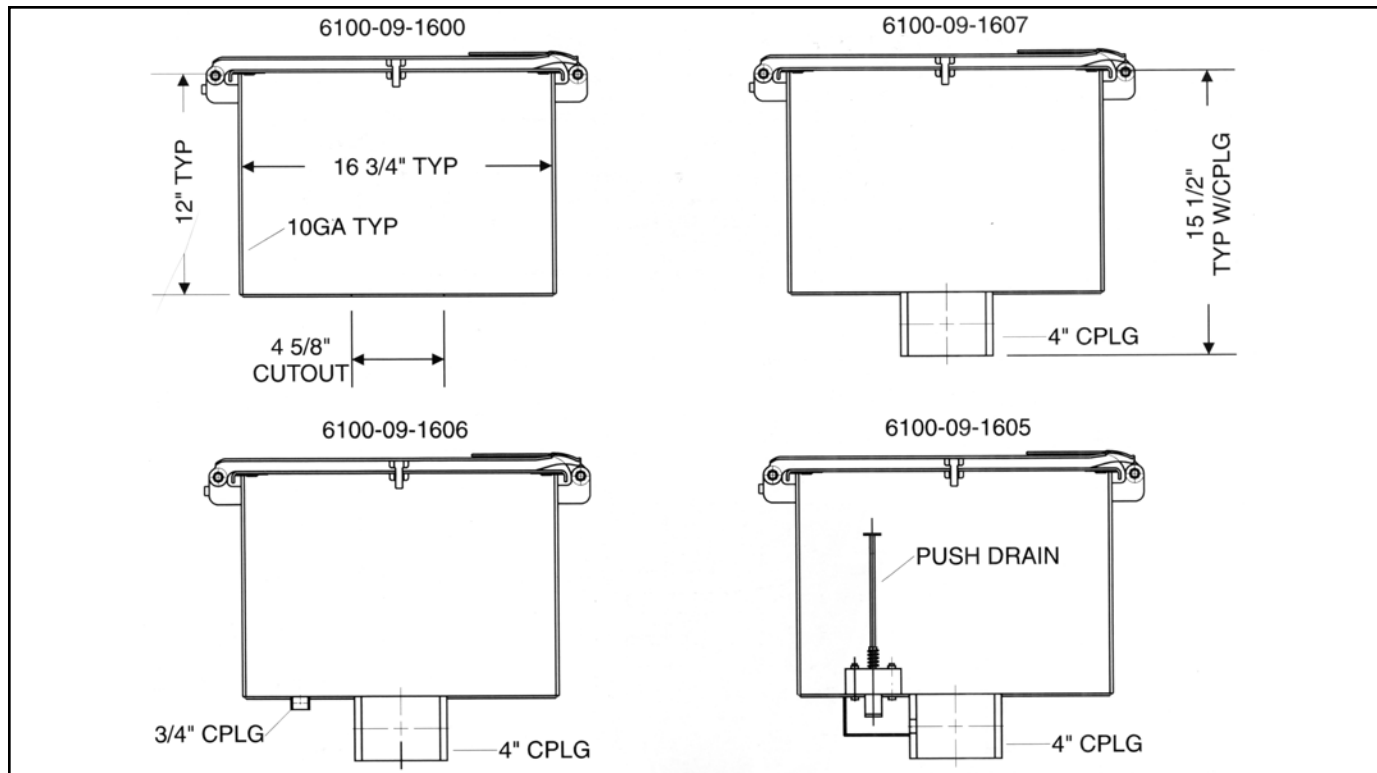
Sturdy spill containment box designed for containment of small spills during filling of an AST. Standard features include a strong back hinge and cam design, which is lockable, gasket for sealing and weather deflecting lip. Available in weld-on style or custom built to your specific requirements. Options are epoxy paint or powder coating outside, push style drain and retrofit coupler for a 4" riser pipe.

Part No.	Size	Wt.lbs
6100-09-1605	10 Gal	52.0

Variations Available - Or built to your specifications



10 GALLON 6100



SPILL CONTAINMENT BOXES

AST

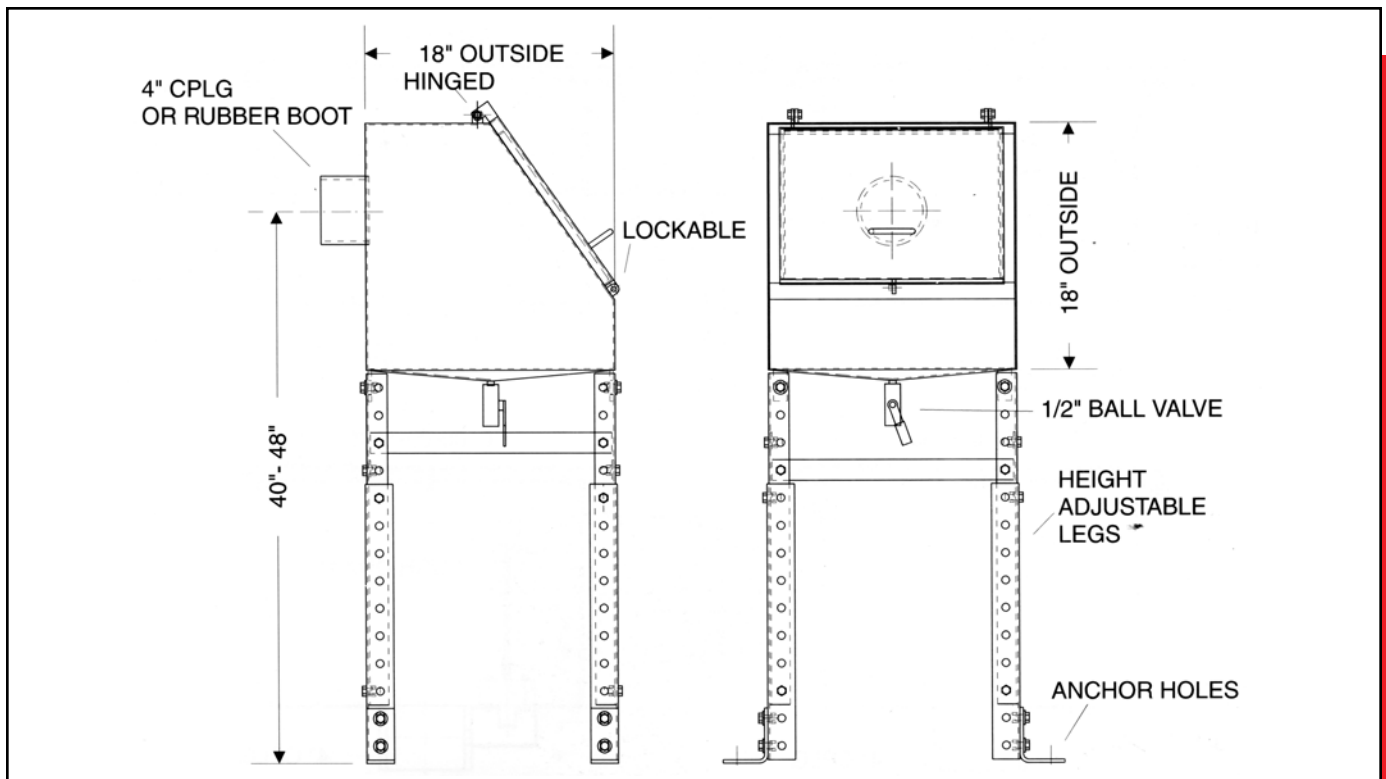
Features

Tough remote spill containment box designed for ground level filling of an AST. Prevents expensive spills during delivery hose disconnect. Durable 12GA mild steel construction with a non-sparking aluminum lid. Standard features include a lockable lid, sloped bottom with 1/2" ball valve for easy and complete drainage, and height adjustable legs. Other capacities are available on request. We can also custom manufacture sizes or styles to your specifications. Epoxy paint or powder coating is optional.

Part No.	Size	Wt.lbs
6100-09-1810	7 Gal	70.0



REMOTE 6100



NEW!!!

NEW!!!

NEW!!!

Clay & Bailey Mfg. Co.

AST Spill Containment Box

Sizes
Available
3½ Gallon
5 Gallon
7 Gallon



**ULC
Listed!
Recertified!!**

#6100-09-1754
7 Gallon

**Florida
DEQ
Listed!
EQ-740**

Standard Features Include

- Heavy Duty Mild Steel Spun Construction
- Powder Coating (Interior/Exterior)
- Drain Assembly
- Male Thread Coupler
- Locking Lid



Clay & Bailey Mfg. Co.

6401 East 40th St., Kansas City, Mo. 64129

1-800-821-6583 Fax: 816-924-3903

Web Site: www.claybailey.com

E-mail: CandBMfg@claybailey.com



A CENTURY'S WORTH OF INNOVATION

Important Features

- Nylon washers at contact points to prevent rust
- Spun construction minimizes leakage
- Weather deflecting lid lip
- Offset drain style available
- Rolled Lip on base



Interior view of drain & coupler.



3.5 gallon style closed.



3.5 gallon style open.

Other Types of AST Spill Containment Boxes Available

- Used Oil
 - Remote Fill
 - Fuel Station (complete with fittings)
 - Custom Design to Your Specifications

FUEL STATION

AST SPILL CONTAINMENT

Clay & Bailey introduces the self-contained AST Spill Containment for a complete spill prevention installation.

Outstanding Design Features

Complete fill point installation

10 Gallon capacity

Several Models available

AST Mount

Wall Mount

Stand Alone

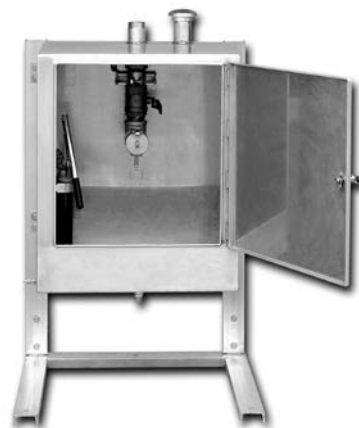
Aluminum Material for Non-Sparking and Non-Rusting

Stand equipment includes hand pump assembly, ball valve, quick disconnect coupler/adaptor

Other accessories available

Connection can be 2" or 3"

Lockable for enhanced security



6100 FUEL STATION

Part #	Description
6100-03-2430	Standard 2" Connection Style S C Box
6100-03-3620	Standard 3" Connection Style S C Box



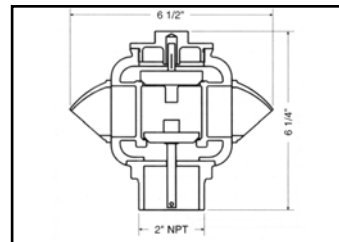
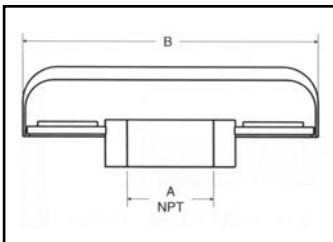
VENTING

- **EMERGENCY**
- **NORMAL**
- **LARGE DIAMETER**

Part No.	P/V	Wt.lbs	Size
Brass			
0088-02-2000	3oz/3oz	7.0	2"
0088-02-2083	8oz/3oz	8.0	2"
Aluminum			
0088-03-2000	1oz/1oz	2.0	2"
0088-03-2030	3lb/1oz	2.0	2"

Features

Storage tank vent valve seats are machined. Openings in the sides of the valve are covered with No. 40 mesh fire screen. Hoods protect vent openings from weather.

**88****300**

Part No.	A NPT		B
	Size	Wt.lbs	
0300-01-0750	3/4"	1.0	4"
0300-01-1000	1"	1.1	4 1/2"
0300-01-1250	1 1/4"	1.6	4 1/2"
0300-01-1500	1 1/2"	2.1	6"
0300-01-2000	2"	2.7	7 1/2"
0300-01-2500	2 1/2"	3.2	8 1/2"
0300-01-3000	3"	5.8	10"

Features

Heavy duty cast iron body. Double outlet free flow vent. Zinc screen prevents contaminants from entering the tank. Available in 3/4" through 3" NPT female threads. Zinc plated finish and set screw style available. Also available in aluminum.



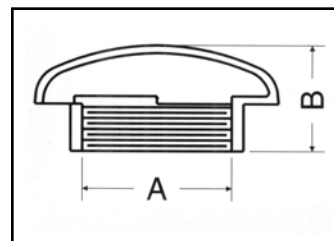
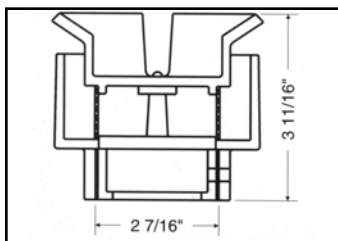
Part No.	A NPT		B
	Size	Wt.lbs	
0401-01-0750	3/4"	0.6	1 1/4"
0401-01-1000	1"	0.7	1 1/4"
0401-01-1250	1 1/4"	1.1	1 5/8"
0401-01-1500	1 1/2"	1.2	1 5/8"
0401-01-2000	2"	1.6	1 3/4"
0401-01-4000	4"	2.5	3"

Features

One piece free flow vent. Cast iron body with zinc screen. Available in 3/4" thru 4" NPT female thread. Zinc plated or aluminum body available.



401



395

Part No.	A NPT	
	Size	Wt.lbs
0395-03-2000	2"	1.0

Features

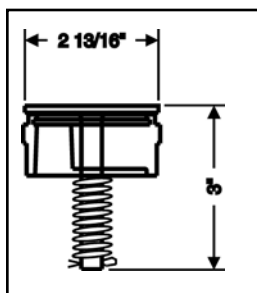
Aluminum construction with brass screen. Design of vent directs vapors upward. At 2.5psi airflow is 46,610 SCFH.



NEW!  LISTED!**354****Features**

A spring loaded pressure relief vent made of brass and contains a brass screen and gasket to insure a tight seal. Air flow at 2.5 psi with screen is 17,707 SCFH, and 19,218 SCFH without screen.

Part No.	Size	Wt.lbs
0354-02-2000	2"	0.9

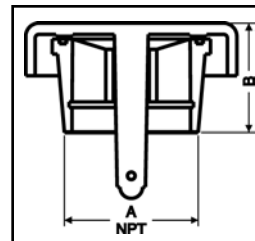
**369****Features**

Male thread, "mushroom" style top design emergency vent made of heavy duty cast iron, (aluminum base available). Top acts as weather deflector and minimizes the chance of theft or vandalism. Machined top & base with Buna N "O" Ring provides a vapor tight seal. Air flow:

	w/screen	wo/screen
4" -	77,415 SCFH	89,641 SCFH
6" -	210,527 SCFH	227,988 SCFH
8" -	455,413 SCFH	501,305 SCFH

Part No.	A NPT		
	Size	Wt.lbs	B
0369-01-4000	4"	19.0	3 9/16"
0369-01-6000	6"	28.0	3 15/16"
0369-01-8000	8"	38.0	3 3/4"
0369-03-4000*	4"	17.0	3 9/16"
0369-03-6000*	6"	26.0	3 15/16"
0369-03-8000*	8"	36.0	3 3/8"

*Aluminum base



NEW!  LISTED!



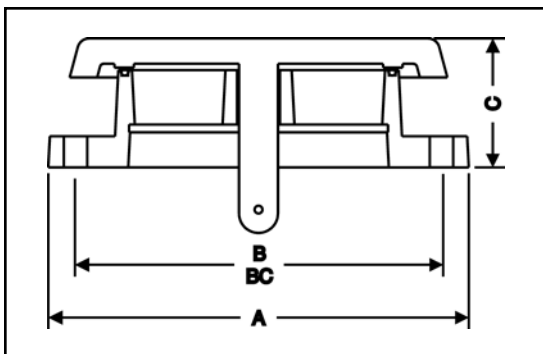
370

Features

Eliminates the need for pipe nipple on installation. Hole patterns conforms to ANSI B16.5 specifications. Machined base and top with Buna N “O” Ring provides vapor tight seal. Air flow at 2.5 psi is 324,423 SCFH for the 8” and 483,340 SCFH for the 10”, with standard 4 mesh screen. Without screen flows are 332,040 SCFH for the 8”, and 496,103 SCFH for the 10”.

A-ANSI B16.5 Hole Pattern				
Part No.	Size	A	B/BC	C
0370-01-8000	8"	13 1/2"	11 3/4"	4 1/8"
0370-01-1000*	10"	16"	14 1/4"	4 1/8"

*Aluminum Base



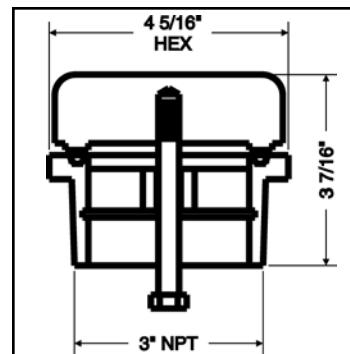
365

Features

Heavy duty cast iron top and base for durability, (aluminum base available). Machined top and base with a Buna-N “O” Ring provides a vapor tight seal. Air flow at 2.5psi is 43,770 SCFH with 4 mesh screen and 46,983 SCFH without. The screen minimizes the chances of vandalism and theft. 3” NPT male threads are standard.

Part No.	Size	Wt.lbs
0365-01-3000	3"	10.0
0365-03-3000*	3"	5.1

*Aluminum base



NEW!  LISTED!**366**

Emergency Vent Airflow Capacity Chart

SCFH=Standard Cubic Feet Per Hour @ 2.5 psig

Screens are standard 4 mesh galvanized steel.

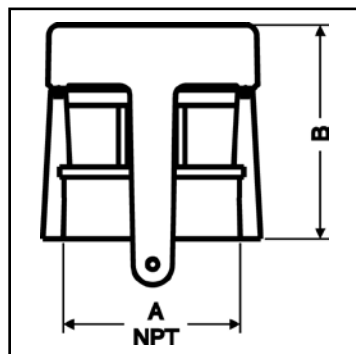
Clay & Bailey emergency vents are flow tested and UL listed.

Part No.	Size A NPT	Wt.lbs	B
0366-01-4000	4"	17.6	5 3/16"
0366-01-5000	5"	22.0	5 3/4"
0366-01-6000	6"	27.6	6 1/4"
0366-03-4000*	4"	10.2	5 3/16"
0366-03-5000*	5"	20.0	5 3/4"
0366-03-6000*	6"	19.3	6 1/4"

*Aluminum Base

Features

Slimline style is ideal for limited space situations. Durable cast iron top and base with aluminum bases available. Machined top and base with a Buna N "O" Ring provide a vapor tight seal. Air flow at 2.5psi is 91,076 SCFH for 4" with screen and 227,191 SCFH for 6" with screen. 4", 5" or 6" NPT female thread is standard.



Size (inch)	Model	Flow w/o screen (CFH)	Flow w/ screen (CFH)
2	354-02-2000	19,218	17,707
3	367-03-30HF	71,750	66,400
3	366-03-30HF	71,750	66,400
3	365-03-3000	46,983	43,770
4	367-03-40HF	118,750	114,800
4	366-03-40HF	118,750	114,800
4	368-01-4000	89,641	77,415
4	369-01-4000	89,641	77,415
4	366-03-4000	105,460	91,076
4	367-03-4000	105,460	91,076
4	368-03-4000	89,641	77,415
4	369-03-4000	89,641	77,415
5	367-03-50HF	200,250	184,500
5	366-03-50HF	200,250	184,500
5	366-03-5000	194,725	171,300
5	367-03-5000	194,725	171,300
6	367-03-60HF	251,700	237,000
6	366-03-60HF	251,700	237,000
6	370-03-60HF	251,700	237,000
6	368-01-6000	227,988	210,527
6	369-01-6000	227,988	210,527
6	366-03-6000	267,284	227,191
6	367-03-6000	267,284	227,191
6	368-03-6000	227,988	210,527
6	369-03-6000	227,988	210,527
8	367-03-80HF	556,589	500,552
8	366-03-80HF	531,289	500,552
8	368-01-8000	501,305	455,413
8	369-01-8000	501,305	455,413
8	368-03-8000	501,305	455,413
8	369-03-8000	501,305	455,413
8	370-01-8000	332,040	324,423
8	370-03-8000	332,040	324,426
8	370-03-80HF	507,198	456,123
10	370-03-1000	496,103	483,340
10	370-03-10HF	715,724	712,828



NEW!  LISTED!



367

Features

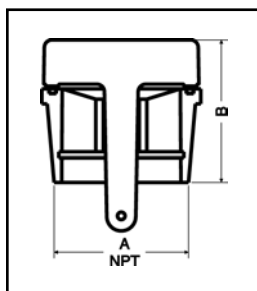
Slimline style is ideal for limited space applications. Heavy duty cast iron top and base with aluminum bases available. Machined top and base with a Buna N "O" Ring provide a vapor tight seal. 4" or 6" male NPT thread standard. Screen minimizes chances of theft or vandalism.

Airflow:

	w/screen	wo/screen
4" -	91,076 SCFH	105,460 SCFH
5" -	171,300 SCFH	194,725 SCFH
6" -	227,191 SCFH	267,284 SCFH

Part No.	A NPT		
	Size	Wt.lbs	B
0367-01-4000	4"	17.0	4 11/16"
0367-01-5000	5"	22.0	5"
0367-01-6000	6"	26.0	5 1/8"
0367-03-4000*	4"	14.0	4 11/16"
0367-03-5000*	5"	20.0	5"
0367-03-6000*	6"	25.0	5 1/8"

*Aluminum Base



368

Features

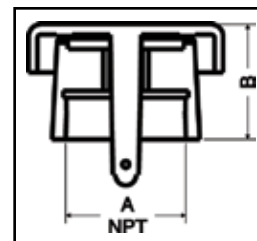
Female thread, hood design made of heavy duty cast iron top and base with aluminum bases available. Hood design acts as a weather deflector and minimizes chances of theft or vandalism. Machined top & base with Buna N "O" Ring provides a vapor tight seal.

Airflow:

	w/screen	wo/screen
4" -	77,415 SCFH	89,641 SCFH
6" -	210,527 SCFH	227,988 SCFH
8" -	455,413 SCFH	501,305 SCFH

Part No.	A NPT		
	Size	Wt.lbs	B
0368-01-4000	4"	21.0	4 1/8"
0368-01-6000	6"	31.0	5"
0368-01-8000	8"	41.0	4 1/8"
0368-03-4000*	4"	19.0	4 1/8"
0368-03-6000*	6"	28.0	5"
0368-03-8000*	8"	37.0	4 1/8"

*Aluminum Base



High Flow EMERGENCY VENT

PATENT # 8,171,955

C  **US Listed**

High Flow Emergency Vent Male Thread Style

Clay & Bailey's High Flow Emergency Vent provides significant SCFH airflow relief when required.

Standard Features

UL US & Canada Listed

Buna N O Ring - provides vapor tight seal

Spring Actuated-assures accurate opening pressure

All Aluminum Construction-lightweight for easy handling and installation. Also, no rust issues from scratches or weathering

Pressure relief set at 0.5 PSI, Full open at 2.5PSI



367 HIGH FLOW

Part #	Size	Weight/LBS
0367-03-30HF	3"	3.0
0367-03-40HF	4"	4.0
0367-03-50HF	5"	5.0
0367-03-60HF	6"	6.0
0367-03-80HF	8"	7.0

SCFH Airflow at 2.5 PSI

	0367-03-30HF	0367-03-40HF	0367-03-50HF	0367-03-60HF	0367-03-80HF
Without Screen	71,750	118,750	200,250	251,700	459,000
With Screen	66,400	114,800	184,500	237,000	430,500

Warning-The emergency vent is designed for "emergency pressure relief" and must be used in conjunction with other venting devices. The emergency vent must be properly sized per UL requirements.

Clay & Bailey emergency vents comply with various codes -PEI RP200, Underwriters Laboratories of US and Canada UL-142, UL-2085, UL-2244, NFPA30, 30A, API 2000



HIGH FLOW EMERGENCY VENT

PATENT # 8,171,955

C  **US Listed**

High Flow Emergency Vent Female Thread Style

Clay & Bailey's High Flow Emergency Vent provides significant SCFH airflow relief when required.

Standard Features

UL US & Canada Listed

Buna N O Ring - provides vapor tight seal

Spring Actuated-assures accurate opening pressure

All Aluminum Construction-lightweight for easy handling and installation. Also, no rust issues from scratches or weathering

Pressure relief set at 0.5 PSI, Full open at 2.5PSI



366 HIGH FLOW

Part #	Size	Weight/LBS
0366-03-30HF	3"	3.0
0366-03-40HF	4"	4.0
0366-03-50HF	5"	5.0
0366-03-60HF	6"	6.0
0366-03-80HF	8"	7.0

SCFH Airflow at 2.5 PSI

	0366-03-30HF	0366-03-40HF	0366-03-50HF	0366-03-60HF	0366-03-80HF
Without Screen	71,750	118,750	200,250	251,700	531,280
With Screen	66,400	114,800	184,500	237,000	500,552

Warning-The emergency vent is designed for "emergency pressure relief" and must be used in conjunction with other venting devices. The emergency vent must be properly sized per UL requirements.

Clay & Bailey emergency vents comply with various codes -PEI RP200, Underwriters Laboratories of US and Canada UL-142. UL-2085, UL-2244, NFPA30, 30A, API 2000

High Flow Emergency Vent

PATENT #8,171,955

C  US Listed

High Flow Emergency Vent Flanged Style

High Flow Emergency Vent provides significant SCFH airflow relief when required.

Flanged style eliminates the potential for cross threading during installation.

Standard Features

UL US & Canada Listed

Buna N O Ring - provides vapor tight seal

Spring Actuated-assures accurate opening pressure

All Aluminum Construction-lightweight for easy handling and installation. Also, no rust issues from scratches or weathering

Pressure relief set at 0.5 PSI

Bolt pattern conforms to ANSI B16.5 specifications



370

Part #	Size	Weight/LBS
0370-03-60HF	6"	14
0370-03-80HF	8"	18
0370-03-10HF	10"	22

SCFH Airflow at 2.5 PSI,		Standard Opening Pressure is 0.5 PSI		
	0370-03-60HF 6"	0370-03-80HF 8"	0370-03-10HF 10"	
Without Screen	251,700	507,198	715,724	
With Screen	237,000	456,123	712,828	

Accessories available include:

Mild Steel Adaptor - 6" #0370-09-6001; 8" #0370-09-8001, 10" #0370-09-1001
Available in 6" and Special Height of 12"

Bolts, Nuts & Gaskets
Screens

Warning-The emergency vent is designed for "emergency pressure relief" and must be used in conjunction with other venting devices. The emergency vent must be properly sized per UL requirements.

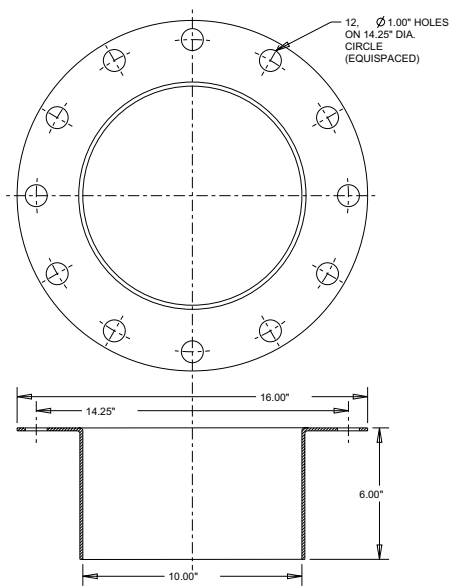
Clay & Bailey emergency vents comply with various codes -PEI RP200, Underwriters Laboratories of US and Canada UL-142, UL-2085, UL-2244, NFPA30, 30A, API 2000



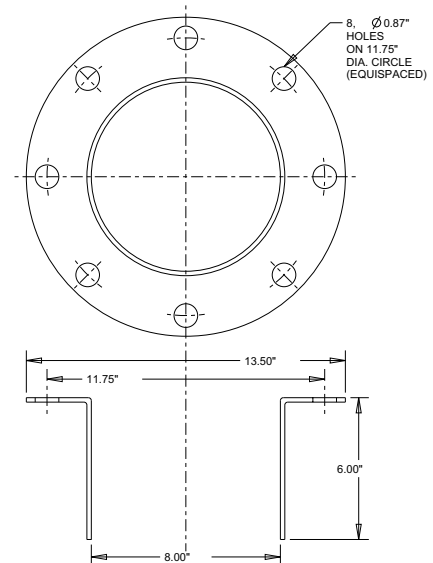
Flanged Adaptor

*Available in
6", 8", 10" Sizes*

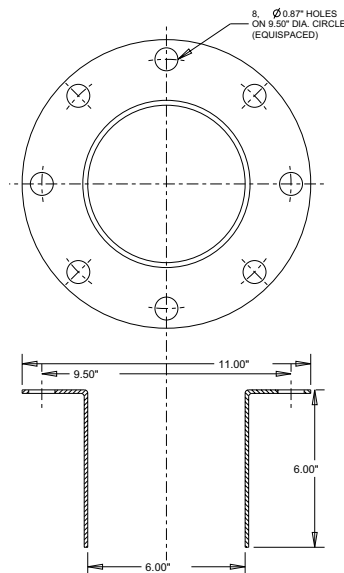
*Mild Steel Material
in 1/4" Thickness*



370-09-1001



370-09-8001



Clay & Bailey Mfg. Co.

Vent SCFH Ratings

Part #	Description	Size	Pressure SCFH		Vacuum SCFH
			with screen	w / o screen	
88-02-2000 +	Brass 3 oz. Pr / 3 oz Vac	2"	25,147		4,270
88-02-3000 +	Brass 3 oz. Pr / 3 oz Vac	3"	51,049		8,669
300-01-0750	Tee Vent	3/4"	4,894		831
300-01-1000	Tee Vent	1"	8,711		1,479
300-01-1250	Tee Vent	1 1/4"	13,616		2,312
300-01-1500	Tee Vent	1 1/2"	19,532		3,317
300-01-2000	Tee Vent	2"	34,846		5,917
300-01-2500	Tee Vent	2 1/2"	53,047		9,008
300-01-3000	Tee Vent	3"	78,350		13,305
354-02-2000 *	Emergency Vent	2"	17,707	19,218	NA
365-01-3000 *	Emergency Vent	3"	43,770	46,983	NA
366-01-4000 *	Emergency Vent - Slimline	4"	91,076	105,460	NA
366-01-6000 *	Emergency Vent - Slimline	6"	227,191	267,284	NA
367-01-4000 *	Emergency Vent - Slimline	4"	91,076	105,460	NA
367-01-6000 *	Emergency Vent - Slimline	6"	227,191	267,284	NA
368-01-4000 *	Emergency Vent	4"	77,415	89,641	NA
368-01-6000 *	Emergency Vent	6"	210,527	227,988	NA
368-01-8000 *	Emergency Vent	8"	455,413	501,305	NA
369-01-4000 *	Emergency Vent	4"	77,415	89,641	NA
369-01-6000 *	Emergency Vent	6"	210,527	227,988	NA
369-01-8000 *	Emergency Vent	8"	455,413	501,305	NA
370-01-8000 *	Emergency Vent - Flanged	8"	324,423	332,040	NA
370-01-1000 *	Emergency Vent - Flanged	10"	483,340	496,103	NA
395-03-2000	UpFlow Vent	2"	46,610		4,110
395-03-4000	Upflow Vent	4"	82,773		6794
401-01-0750	Mushroom Vent	3/4"	4,894		831
401-01-1000	Mushroom Vent	1"	8,711		1,479
401-01-1250	Mushroom Vent	1 1/4"	13,616		2,312
401-01-1500	Mushroom Vent	1 1/2"	19,532		5,317
401-01-2000	Mushroom Vent	2"	38,846		5,917
401-01-4000	Mushroom Vent	4"	54,873		8,310

+ Available in Aluminum

* Available with Aluminum Base



6401 E. 40th St. Kansas City, Missouri 64129

A CENTURY'S WORTH OF INNOVATION
Clay and Bailey Mfg. Co.

1-816-924-3900 1-800-821-6583 FAX: 1-816-924-3903
www.claybailey.com email: CandBmfg@claybailey.com

LARGE DIAMETER VENTS

Features

Made from mild steel and available in diameters from 16" - 36" with 4" or 7" collar heights, the #546 is ideal for large capacity emergency venting. Cover has weather deflecting lip with bolts welded to lid, preventing removal. Bolt thread length prevents full tightening. Coatings and gaskets are options.

Part No.	Size	Wt.lbs
0546-09-1600	16"	48.0
0546-09-1800	18"	57.0
0546-09-1805	18"	71.0
0546-09-2000	20"	65.0
0546-09-2005	20"	81.0
0546-09-2400	24"	85.0
0546-09-2405	24"	101.0
0546-09-3000	30"	131.0
0546-09-3005	30"	162.0
0546-09-3600	36"	171.0

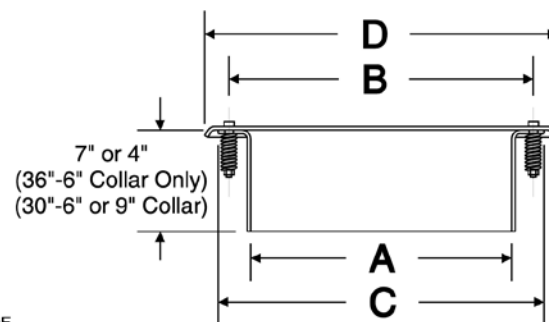
* 7" High Collar

** 9" High Collar



546

546 Dimensions



Cover and Collar are 1/4"
Mild Steel Plate

SIZE OF MANHOLE INCHES	A	B	C	D	BOLT LENGTH	NUMBER OF BOLTS & SPRINGS
16"	16"	19"	20 1/2"	22 3/8"	3 1/2"	16
18"	18"	21"	22 1/2"	24 3/8"	3 1/2"	18
20"	20"	23"	24 1/2"	26 3/8"	3 1/2"	24
24"	24"	27"	28 1/2"	30 3/8"	3 1/2"	24
30"	30"	33"	35 1/2"	37 3/8"	3 1/2"	42
36"	36"	39"	42"	44 3/8"	3 1/2"	52



NEW!!!

NEW!!!

NEW!!!

Clay & Bailey Mfg. Co.

introduces the solution to the problem of AST Emergency Vents passing regulatory agencies pressure decay tests on Aboveground Storage Tanks:

Excellent Owner Benefits

- * Avoids repeated tests due to vapor leakage
- * Weather resistant paint used to enhance installation appearance



Outstanding Design Features

- * Large gasket & O Ring surface for sealing
- * Specially machined base for a tight seal

Sizes & Styles Available

4" Male & Female Thread

6" Male & Female Thread

8" Male & Female Thread & Flanged



A CENTURY'S WORTH OF INNOVATION

Clay & Bailey Mfg. Co.

6401 E. 40th St., Kansas City, Mo. 64129

1-800-821-6583 Fax: 816-924-3903

Web Site: www.claybailey.com

E-mail: CandBMfg@claybailey.com



ALARMS

LIQUID

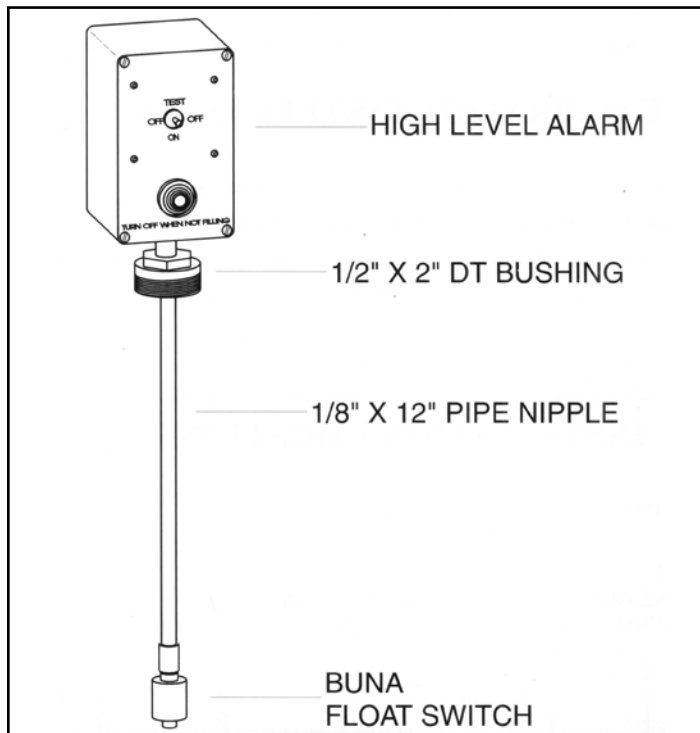
LEVEL GAUGES

C  **US Listed**

Features

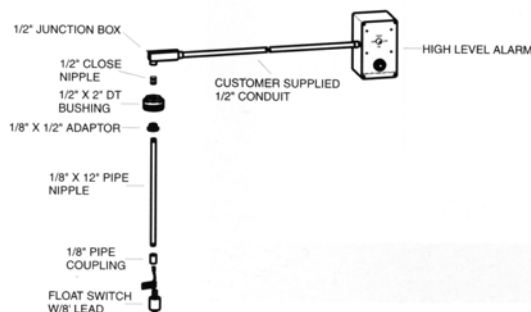
Designed to meet current codes for overfill prevention. Alarm is battery operated, intrinsically safe, and complies with NEMA requirements. 95 decibel alarm alerts delivery person when fluid in tank reaches the predetermined level. Level is adjustable for specific applications. Unit comes ready to install with Alarm, float switch, batteries and one length of 1/8" pipe. May be ordered with #1313 sight gauge, (#1350), for complete liquid level monitoring and alarm.

Part No.	Size	Wt.lbs
1400-13-1000	2"	2.0

**1400**

1400 Installation Instructions

1. The 1400 comes pre-assembled ready to install, with a 12" pipe nipple for an alarm switch depth of 12". If this is sufficient then merely thread the unit into a 2" opening on your tank.
2. If a different alarm depth is needed, use the chart on this page to determine the proper depth for your round horizontal tank, (for vertical round tanks or rectangular tanks, simply multiply the total height of the primary tank by the percentage shut-off).
3. Loosen the four plastic screws and remove the cover on the alarm box, then disconnect the two wires running into the terminals inside.
4. Loosen and remove the float switch from the 1/8" pipe coupling, being careful not to damage the float mechanism, pull the wires through and out of the 1/8" pipe nipple.
5. Remove the existing 1/8" pipe nipple and replace with proper length.
6. Run the wires back through the pipe and into the box, connecting the wires to the terminals.
7. Check the alarm function by moving the switch to the "on" position and moving the float up to trigger the alarm. If the alarm sounds with the float in the lowered position, remove the snap ring securing the float to the switch, and reverse the direction of the float, (changing the direction of the float determines whether the alarm sounds with the float in the "up" or "down" position).
8. Test again, and reassemble the unit.
9. Install in tank.



ROUND HORIZONTAL TANK HEIGHT	% SHUT-OFF 90% HEIGHT	95% HEIGHT
32"	27"	28.9"
34"	28.7"	30.7"
36"	30.4"	32.5"
38"	32.1"	34.3"
40"	33.7"	36.1"
42"	35.4"	37.9"
44"	37.1"	39.7"
46"	38.8"	41.6"
48"	40.5"	43.4"
50"	42.2"	45.2"
52"	43.9"	47"
54"	45.6"	48.8"
56"	47.3"	50.6"
58"	49"	52.4"
60"	50.6"	54.2"
62"	52.3"	56"
64"	54"	57.8"
66"	55.7"	59.6"
68"	57.4"	61.4"
70"	59.1"	63.3"
72"	60.8"	65.1"
74"	62.5"	66.9"
76"	64.2"	68.7"
78"	65.9"	70.5"
80"	67.5"	72.3"
82"	69.2"	74.1"
84"	70.9"	75.9"
86"	72.6"	77.7"
88"	74.3"	79.5"
90"	76"	81.3"
92"	77.7"	83.2"
94"	79.4"	85"
96"	81.1"	86.8"
98"	82.7"	88.6"
100"	84.4"	90.4"
102"	86.1"	92.2"
104"	87.8"	94"
106"	89.5"	95.8"
108"	91.2"	97.6"
110"	92.9"	99.4"
112"	94.6"	101.2"
114"	96.3"	103"
116"	98"	104.9"
118"	99.6"	106.7"
120"	101.3"	108.5"



A CENTURY'S WORTH OF INNOVATION

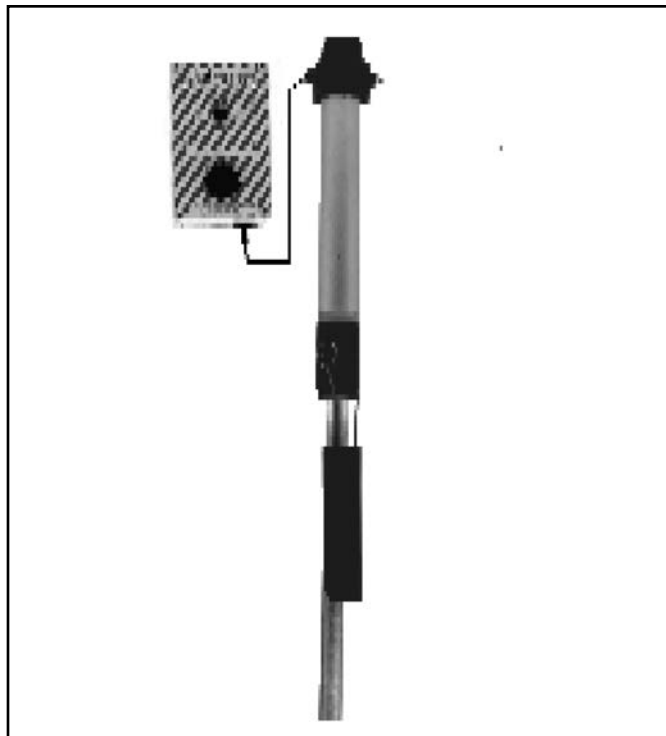
Clay and Bailey Mfg. Co.

O.F.P. VALVE WITH AUDIBLE ALARM

Features

Combination of #1228 C&B 3X4 Overfill Prevention Valve and #1400 Audible Alarm allows for high level alarm and Overfill Prevention of an AST through one opening. The C&B 3X4 is mechanical in operation and reliably shuts off the fuel supply of an AST at a predetermined level. Combining the C&B 3X4 with the #1400 Audible Alarm helps meet current regulations for AST Overfill Prevention. Alarm is battery operated, intrinsically safe, and complies with NEMA requirements. 95 decibel alarm alerts delivery person when fluid in tank reaches the predetermined level. Level is adjustable for specific applications. Unit comes ready to install with C&B 3X4, Alarm, float switch and batteries. Alarm may also be ordered with #1313 sight gauge, (#1350), for complete liquid level monitoring and alarm.

Part No.	Size	Wt.lbs
01228-03-35AL	3"	15.0



1228 C&B 3X4 With Alarm

MISCELLANEOUS ITEMS BALL VALVES THERMAL VALVES DRAWINGS

Clay and Bailey Ball Valves are used throughout fueling systems where a shut-off point is desirable to isolate a section of the piping system. These full-port, forged brass valves feature a manual open-close arm and a quick quarter turn handle, allowing easy shut down of your AST or UST system.

Specifications for Ball Valves

Hot Forged Brass Body

Hard Chrome-Plated Steel Ball

Teflon Seals

Steel Handle with Plastic Cover

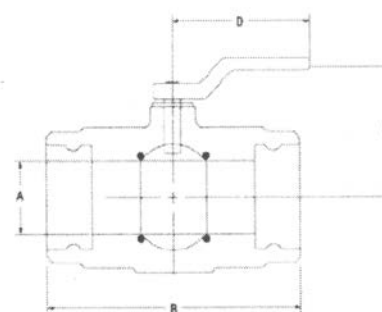
UL Listed

CSA Approved

FM Approval

**#700**

Model Number	Size	Dimensions (in.)			
		A	B	C	D
700-02-0025	1/4"	0.32"	1.77"	1.49"	3.33"
700-02-0025	1/2"	0.59"	2.44"	1.88"	3.85"
700-02-0075	3/4"	0.78"	2.71"	2.28"	4.80"
700-02-0100	1"	0.98"	3.07"	2.44"	4.88"
700-02-0150	1 1/2"	1.57"	3.89"	3.34"	6.02"
700-02-0200	2"	1.96"	4.33"	3.79"	6.37"
700-02-0300	3"	2.93"	6.97"	5.55"	10.10"
700-02-0400	4"	3.96"	8.51"	6.07"	10.08"



EMERGENCY VALVE

2" External Thermal Emergency Valve

**#305**

Designed for installation in the piping of an Aboveground Storage Tank where product flow must be stopped in case of fire.

The #305-06-2000 2" External Thermal Emergency Valve is engineered for rugged use with components designed of high grade ductile iron and brass.

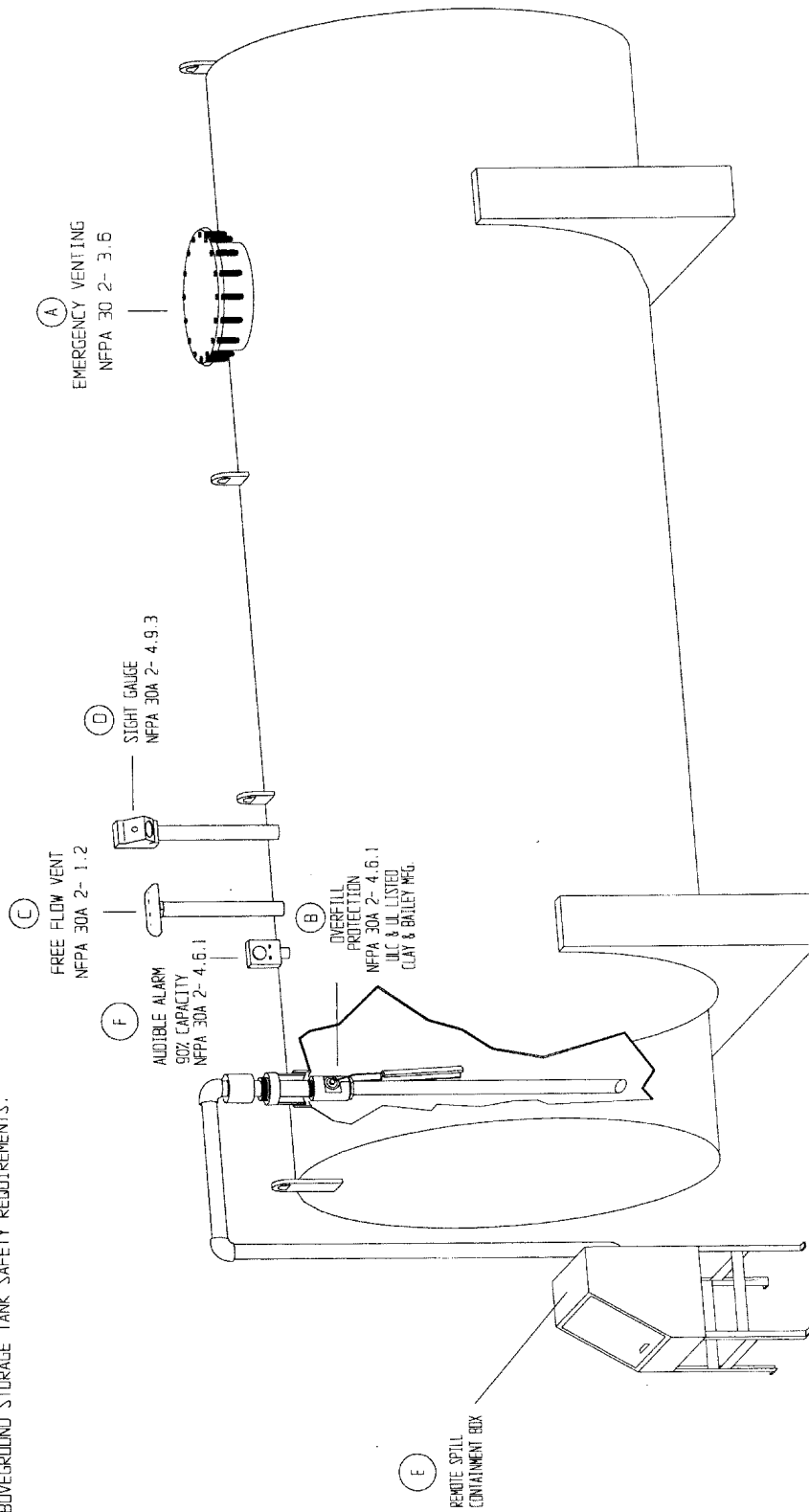
Thermal shock rating of 200 PSI WOG. Fuse Link melting point of 158 degrees F. O Ring is made of fuel resistant PTFE (Encapsulated Fluorocarbon Elastomer) and the gasket is made of fuel resistant TFE (Tetra Fluoro Ethylene).

The standard model has 2" NPT threads on the inlet and outlet openings.



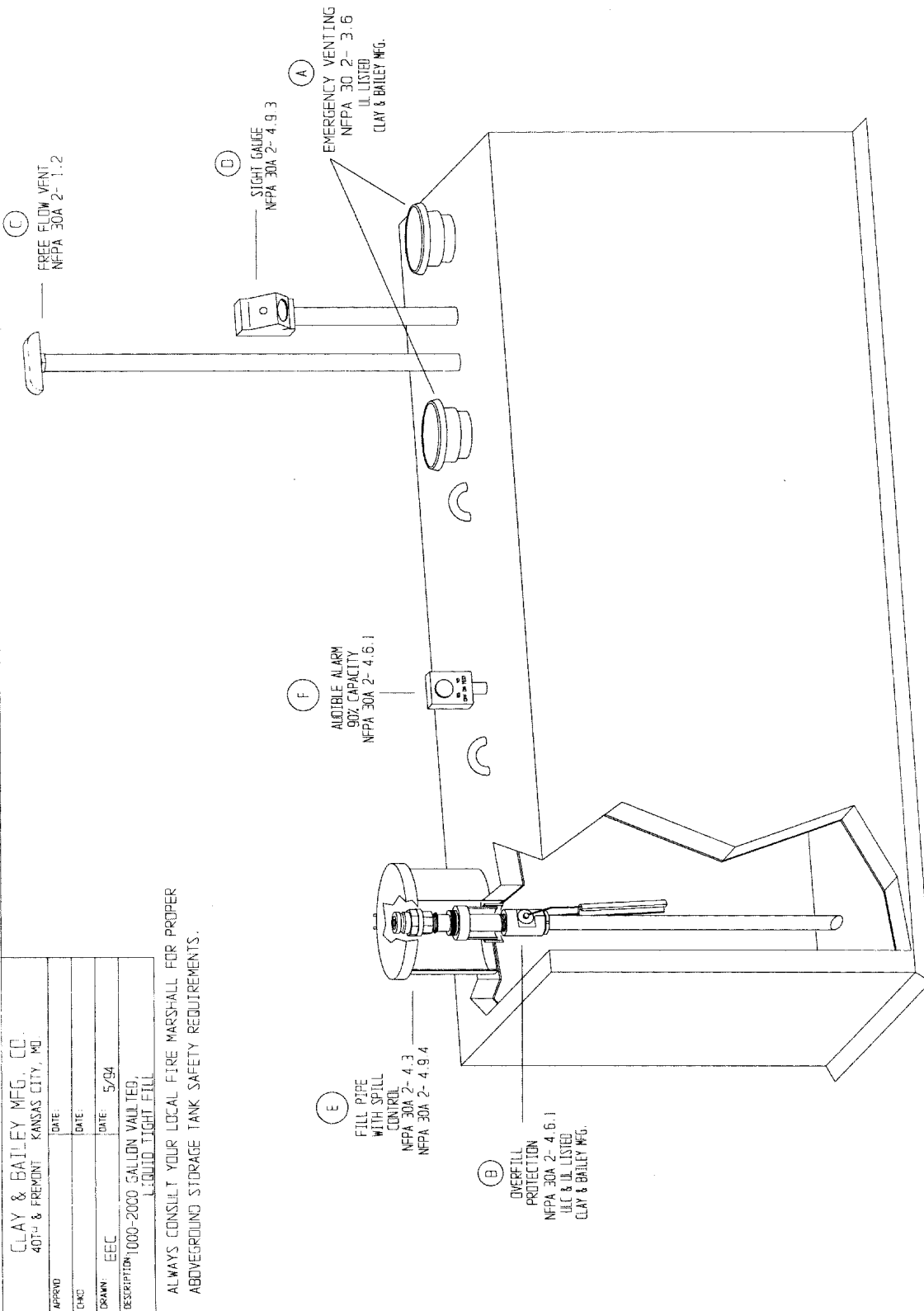
CLAY & BAILEY MFG. CO. 40TH & FREMONT KANSAS CITY, MO.			
APPROV.	DATE:	DATE:	DATE:
C-KO:			
DRAWN: EEC	DATE: 6/94		
DESCRIPTION: 2500-12,000 GALLON STEEL, REMOTE FILL			

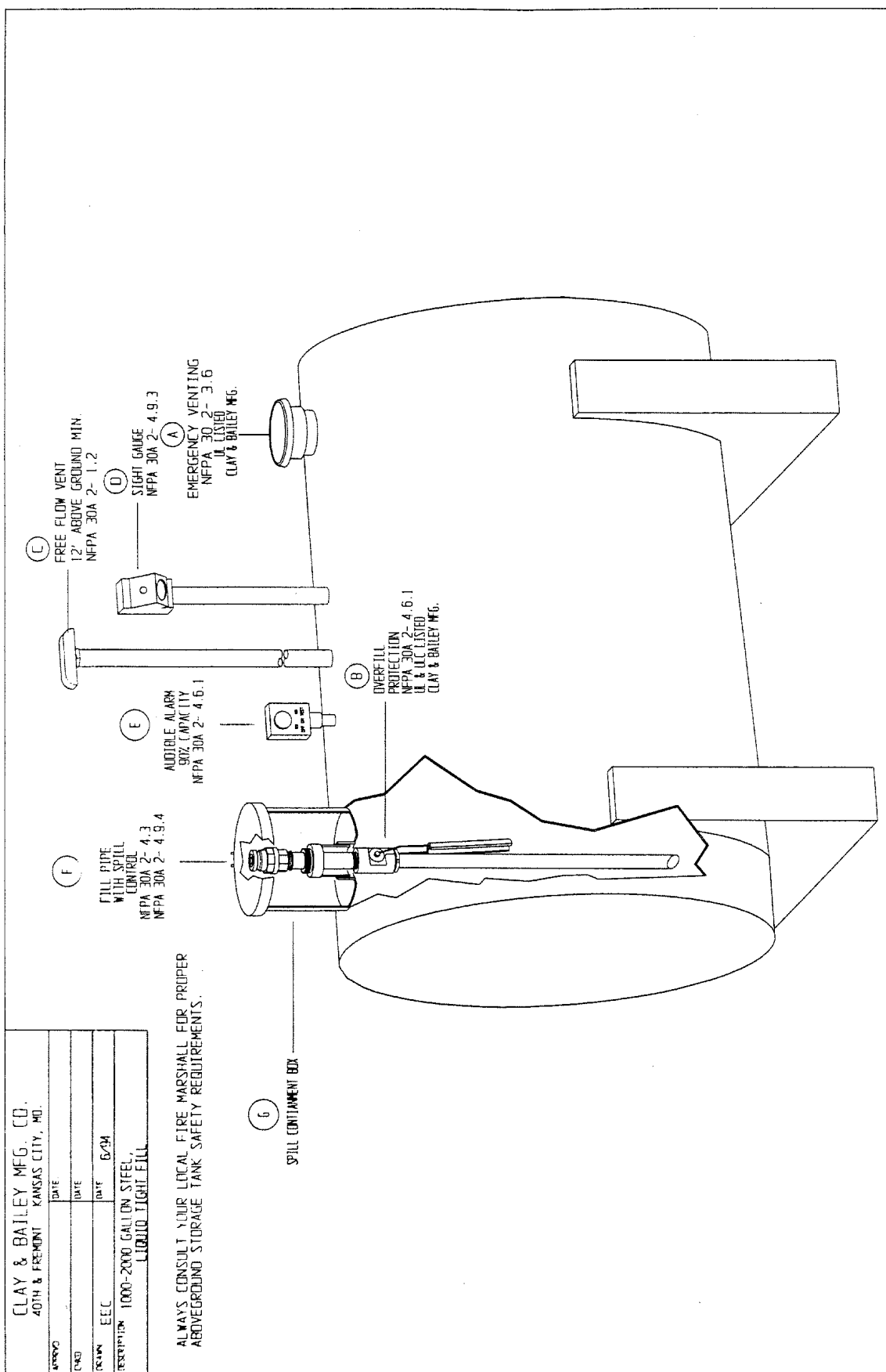
ALWAYS CONSULT YOUR LOCAL FIRE MARSHALL FOR PROPER
ABOVEGROUND STORAGE TANK SAFETY REQUIREMENTS.



CLAY & BAILEY MFG. CO.	
40TH & FREMONT KANSAS CITY, MO	
APPROVED	DATE:
CHG	DATE:
DRAWN: EEC	DATE: 5/94
DESCRIPTION: 1000-2000 GALLON VULTEQ, LIQUID TIGHT FILL	

ALWAYS CONSULT YOUR LOCAL FIRE MARSHALL FOR PROPER
ABOVEGROUND STORAGE TANK SAFETY REQUIREMENTS.





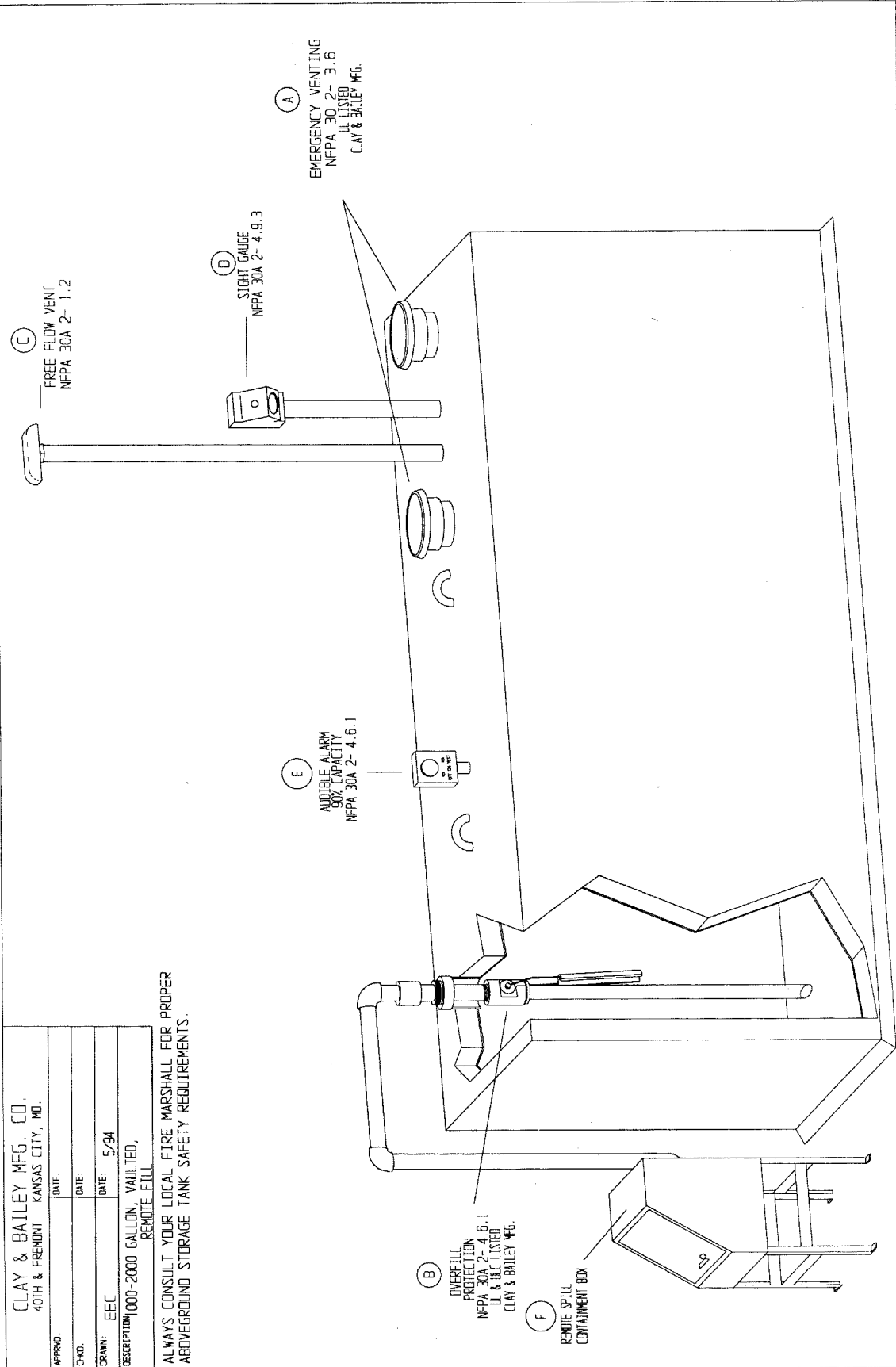
6401 E. 40th St. Kansas City, Missouri 64129

A CENTURY'S WORTH OF INNOVATION
Clay and Bailey Mfg. Co.

1-816-924-3900 1-800-821-6583 FAX: 1-816-924-3903
www.claybailey.com email: CandBmfg@claybailey.com

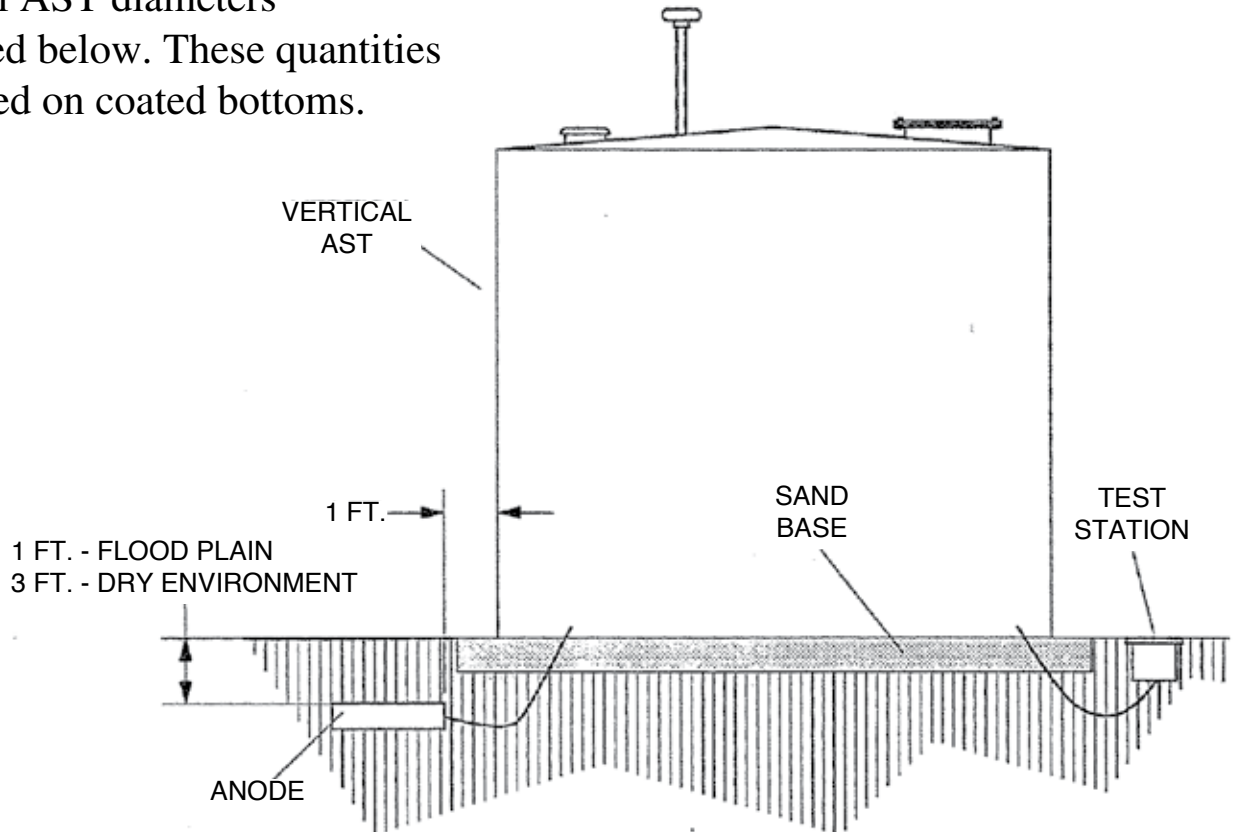
CLAY & BAILEY MFG. CO. 40TH & FREMONT KANSAS CITY, MO.			
APPROV.	DATE:	DATE:	DATE: 5/94
CHKD.			
DRAWN: EEC			
DESCRIPTION: 1000-2000 GALLON, VAULTED, REMOTE FILL			

ALWAYS CONSULT YOUR LOCAL FIRE MARSHALL FOR PROPER ABOVEGROUND STORAGE TANK SAFETY REQUIREMENTS.



CORROSION PROTECTION FOR ASTs

Protecting ASTs from corrosion with sacrificial anodes could greatly extend the life of the tank. Even with a sand base corrosion can still occur on the tank bottom. Over time damage could lead to leakage and clean up costs, not to mention possible EPA fines. Minimum anode quantities & weights for various Vertical AST diameters are listed below. These quantities are based on coated bottoms.



Tank Bottom Diameter	Quantity of Anodes	Weight/type
6'	1	10# Zinc Hi-Pure
8'	1	10# Zinc Hi-Pure
10'	2	10# Zinc Hi-Pure
12'	2	10# Zinc Hi-Pure

Based on average soil conditons, coated tank bottoms

This guide is intended for reference use only. All final details of design and construction must meet the requirements of federal, state, and local codes. In cases where plan approval is required, such approval must be obtained from the authority having jurisdiction before any work is performed.

The equipment presented in this Guide applies only to shop fabricated tanks.

Ethanol, Methanol & BioDiesel Fuel Compatible Products Available from

Clay & Bailey Mfg Co

Clay & Bailey has developed a product line to meet the challenges of today's fuel requirements. We now have Ethanol, Methanol & BioDiesel

Fuel compatible products for Aboveground Storage Tanks.

Here is a listing of Ethanol, Methanol & BioDiesel fuel compatible products

Overfill Prevention Valves

Sizes available: 2"x4", 3"x4", 4"x6", 2"

Emergency Vents

Sizes available: 3" thru 10"

8 OZ and 16 OZ Pressure Relief Settings

Free Flow Vents

3/4" thru 4" Tee Style and Mushroom Style

Pressure/Vacuum Vents

2" and 3" Sizes

Spill Containment Boxes

Hatches

WARNINGS

- Fire Hazard - Death or serious injury could result from spilled liquids.
- Install only on shop fabricated atmospheric tanks built and tested in accordance to industry standards such as UL142, NFPA 30 & 30A and API 650.
- Install in accordance with all applicable local, state and federal laws.
- Emergency vents only provide emergency pressure relief and must be used in conjunction with a normal vent or pressure vacuum vent.
- Emergency vents as well as normal vents and pressure vacuum vents must be properly sized and selected for each specific tank application.
- For your safety, it is important to follow local, state, federal and/or OSHA rules that apply to working inside, above, or around the storage tank and piping area. Use all personal protective equipment required for working in the specific environment.
- Tanks could be under pressure. Vapors could be expelled from tank vents, piping, valves or fittings while performing installation. Vapors could catch fire or cause an explosion. Avoid sparks, open flame or hot tools when working on vents.
- Clogged or restricted vents could cause damage to tanks and piping releasing liquids which could catch fire.
- Dust, debris, freezing rain, freezing condensation or other contaminants could clog or restrict the vents.
- In freezing conditions, inspect the vents immediately before filling or unloading a tank.
- Do not fill or unload from a tank unless you are certain the tank vents will operate correctly.