

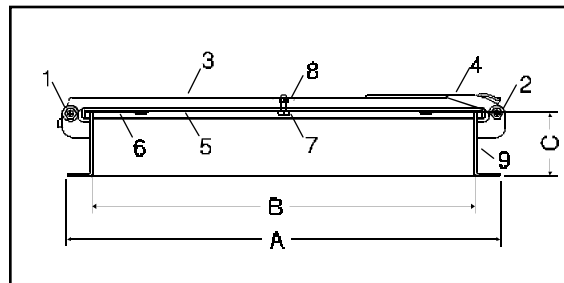
## Features

Sturdy manhole allows full opening access. Ideal for non-pressure applications, such as inspection hatches or access to dry storage bins. Strongback hinge and cam design provides strength, allows quick opening and is lockable. Available as a bolt-on or weld-on style. Standard gasket material is Buna-N with other gasket materials available.



1901

Part No.	Size	Material	Wt.
1901-03-1600	16"	Aluminum	22
1901-03-2000	20"	Aluminum	28
1901-07-1600	16"	304 SST	27
1901-07-2000	20"	304 SST	36
1901-09-1600	16"	Mild Steel w/weld collar	26
1901-09-2000	20"	Mild Steel	35
1901-17-1600	16"	Mild Steel Plated	26
1901-17-2000	20"	Mild Steel Plated	35



## 1901 Parts Listing

Part Number	Size	Description	Std. Material	Qty.
1		Hinge Pin	Mild Steel	1
1901-09-2008		Hex Nut	Mild Steel	1
1901-09-2151	3/8"			
2		Cam Pin	Mild Steel	1
1901-09-2007		Hex Nut	Mild Steel Plated	1
1607-17-1618	3/8"			
3		Hinge	Mild Steel	1
1901-09-2109		Cam	Mild Steel	1
4		Cover	Mild Steel	1
2097-09-1604		Cover Gasket	Buna-N	1
5		Stud	Mild Steel	1
1901-09-2101		Hex Nut	Mild Steel	1
6		Collar	Mild Steel	1
1820-05-2012				
7				
1901-09-2150				
8				
1901-09-2151				
9				
1901-09-2126				