

# Clay & Bailey Mfg. Co.



A CENTURY'S WORTH OF INNOVATION

## Manhole for Hot Product Trailers

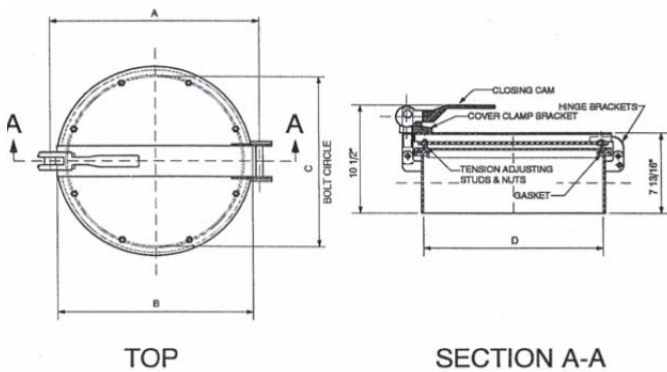


**1607-HM198**

### Features:

Designed to exceed DOT HM198 requirements for elevated temperature closures. Heavy duty, full opening manhole features safety cam (ball-in-socket) design, high temperature gasket (rated for 450F operating temperature) and a variety of collar heights. Options include aluminum collar and other gasket materials. Special models available for retrofitting to existing collars are available.

Part No.	Size	Wt.
1607-09-1657	16" M Steel	41.0
1607-09-1857	18" M Steel	55.0



	A	B	C	D
16"	19 5/8"	18 5/8"	16 1/2"	16 3/16"
18"	21 5/8"	20 3/8"	18 1/2"	18 3/16"

### Maintenance Note:

Check gaskets periodically for cracking or UV damage, replace if necessary.



## 1607 HM 198 Manhole for DOT Hot Product Trailers

### *Repair Parts Listing*

<u>Item</u>	<u>Part Number</u>	<u>Description</u>	<u>Material</u>
A	1801-01-1604	Cam Handle	Cast Iron
B	1607-05-1610	16" Gasket	Fiberglass Teflon Encapsulated
C	1607-05-1810	18" Gasket	Fiberglass Teflon Encapsulated
D	1607-09-1621	Cam Link Assembly	Mild Steel
E	1607-09-0112	Retainer Nut	Mild Steel
F	1820-09-2003	Bolt	Mild Steel
G	1607-17-1617	Jam Nut	Pltd. Mild Steel

