

PIPE PLUGS

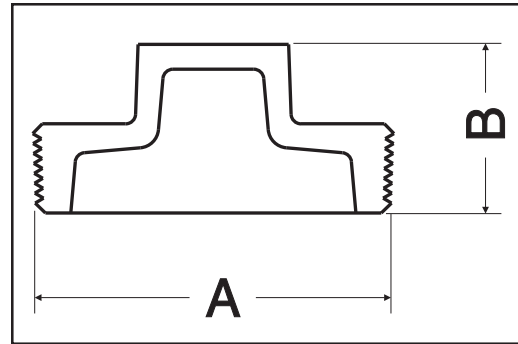


27

Features

Heavy Duty Cast Iron Plug used on UST or AST installations. Available in galvanized as an option.

Part No.	Size	lbs	Thds	
			A	B
0027-01-0500	1/2"	0.10	1/2"	3/4"
0027-01-0750	3/4"	0.13	3/4"	1 1/8"
0027-01-1000	1"	0.25	1"	1 1/8"
0027-01-1250	1 1/4"	0.40	1 1/4"	1 1/8"
0027-01-1500	1 1/2"	0.60	1 1/2"	1 1/2"
0027-01-2000	2"	0.80	2"	1 1/2"
0027-01-2500	2 1/2"	1.25	2 1/2"	1 3/4"
0027-01-3000	3"	2.10	3"	1 7/8"
0027-01-3500	3 1/2"	3.40	3 1/2"	2 1/4"
0027-01-4000	4"	3.60	4"	2 1/4"
0027-01-6000	6"	8.0	6"	2 1/2"



57

Features

Heavy Duty Cast Iron Plug used on UST or AST installation. Crossbar opening allows for quick removal or installation.

Part No.	Size	lbs	Thds	
			A	B
0057-01-4000	4"	3.8	4"	2 1/4"

