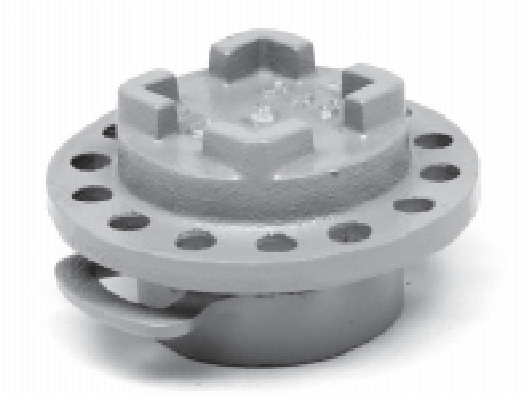


# FILLCAPS

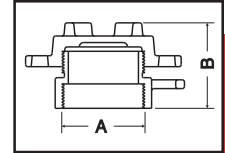


**94**

Part No.	Size	lbs	A	B
0094-01-2000	2"	2.5	2"	2 3/8"
0094-01-3000	3"	3.5	3"	2 1/2"
0094-01-4000	4"	5.0	4"	2 3/4"

## Features

Lockable, water tight fillcap consisting of a cast iron lid, gasket and brass base. The lid has a threaded cap for a tight seal, and is suitable for fillports on storage tanks. Brass Lid Available.

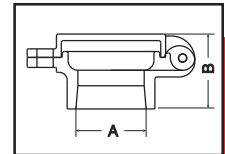


**232**

Part No.	Size	lbs	A	B
0232-01-2000	2"	2.5	2"	2 1/2"
0232-01-2500	2 1/2"	3.5	2 1/2"	2"
0232-01-3000	3"	3.0	3"	2 1/8"
0232-01-4000	4"	3.8	4"	2 1/4"

## Features

Lockable, heavy duty fillcap. Loose fitting lid and base are made of cast iron.



**232 1/2**

Part No.	Size	lbs	A	B
0232-01-5200	2"	2.0	2"	2 3/8"

## Features

Light weight, lockable fillcap. Loose fitting lid and base are made of cast iron.

