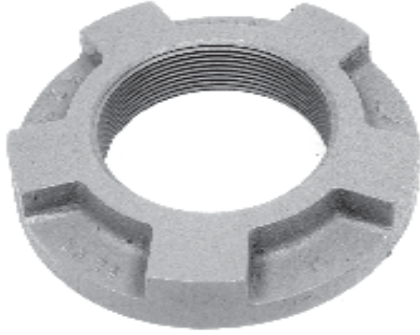


FLANGES

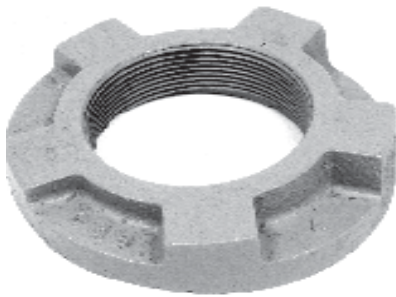
**124**

| Part No. | Size | Wt./ Lbs. |
|-------------|------|--------------|
| 124-01-2000 | 2" | 6 |
| 124-01-3000 | 3" | 11 |
| 124-01-4000 | 4" | 15 |
| 124-01-6000 | 6" | 30 |

Features

Blind tapped flange unions made of cast iron. Round half of union is a regular flange with the square half the blind tap.

| 124 & 125 Flange Union | | | Specifications |
|------------------------|--------------|------------|---|
| Size | Stud tapping | # of Holes | Note: #125 Hillside Flange unions have 1" pitch per foot. |
| 2" | 1/2" | 4 | |
| 3" | 5/8" | 4 | |
| 4" | 5/8" | 5 | |
| 6" | 5/8" | 6 | |

**125**

| Part No. | Size | Wt./ Lbs. |
|-------------|------|--------------|
| 125-01-2000 | 2" | 6 |
| 125-01-3000 | 3" | 11 |
| 125-01-4000 | 4" | 15 |
| 125-01-6000 | 6" | 30 |

Features

Hillside, blind tapped flange unions made of cast iron. Pitch of union is 1" per foot. Round half of union is a regular flange with the square half the blind tap.