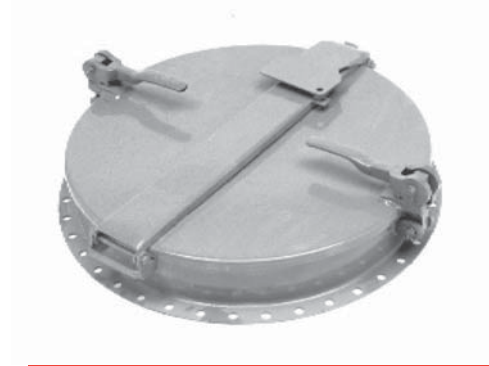


# MANHOLES

## Features

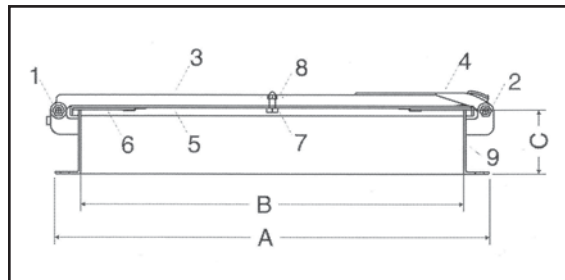
Full opening 24" manhole ideal for non-pressure applications. Unique "Ball-in-Socket" safety cam design provides extra security. Strong back hinge and cam design is lockable and provides extra strength to cover. Standard design is bolt-on with weld-on versions available.



**1925**

Part No.	Size	Material	Wt.
1925-03-9000	24"	Aluminum	34
1925-07-9000	24"	304 SST	42*
1925-03-9000	24"	Mild Steel	40

Size	A	B	C
24"	27.125"	24"	4"



## 1925 Parts Listing

Part Number	Size	Description	Std. Material	Qty.
1		Hinge Pin	Mild Steel	1
	3/8"	Hex Nut	Mild Steel	1
2		Cam Pin	Mild Steel	1
	3/8"	Hex Nut	Mild Steel Plated	1
3		Hinge	Mild Steel	1
4		Cam	Mild Steel	1
5		Cover	Mild Steel	1
6		Gasket	Buna-N	1
7		Stud	Mild Steel	1
8		Hex Nut	Mild Steel	1
9		Collar	Mild Steel	1
	1801	Cam		

\* Parts in contact are 304 SS; all other parts are MS plated.